

# Straphangers Campaign

## W SUBWAY LINE PROFILE



**Straphangers Campaign MetroCard Rating \$1.05**

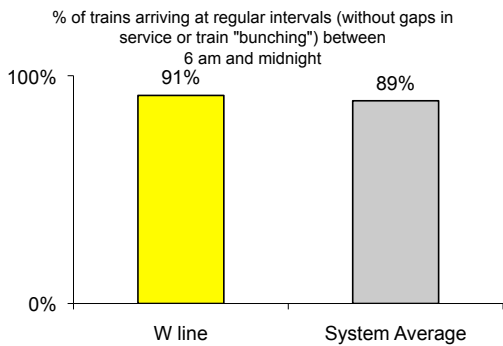
The W line ranks tied for 11th best of the 21 subway lines rated by the Straphangers Campaign. Our ranking is based on the MTA New York City Transit data below, using a method described at [www.straphangers.org](http://www.straphangers.org).

**The W line has a below-average amount of daytime service, and doesn't run at night.**

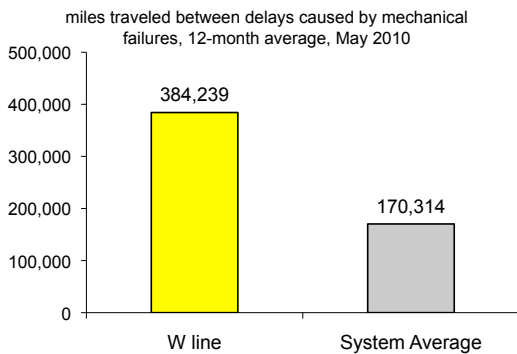
scheduled minutes between weekday trains as of August 2009

	AM Rush	Noon	PM Rush	Overnight
<b>W line</b>	<b>8</b>	<b>10</b>	<b>10</b>	<b>-</b>
<b>System Average</b>	<b>5:28</b>	<b>8:23</b>	<b>5:45</b>	<b>20</b>

**The W arrives with above-average regularity...**

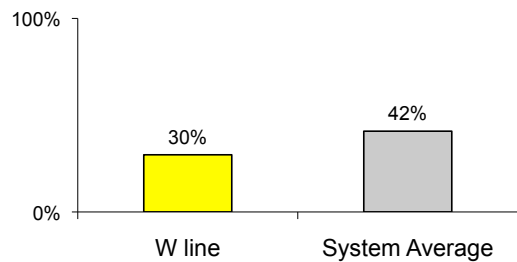


**and its cars break down less often than those on the average line.**

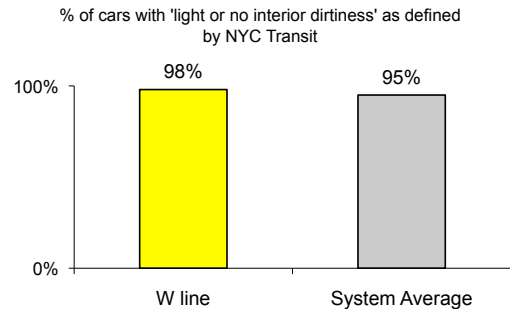


**You're much less likely to get a seat on the W.**

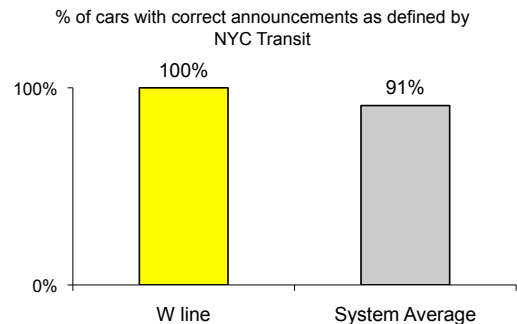
% of passengers with seats at most crowded point during rush hour



**The W line is cleaner than average...**



**and performs perfectly on in-car announcements.**



**Suggestions? Questions? Complaints? Call (917) 417-7819**