

Straphangers Campaign

W SUBWAY LINE PROFILE



Straphangers Campaign
MetroCard Rating

95¢

The W line ranks tied for 16th place out of the 21 subway lines rated by the Straphangers Campaign. Our ranking is based on the MTA New York City Transit data below, using a method described at www.straphangers.org.

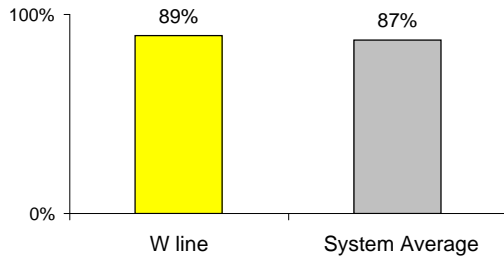
The W line has a below-average amount of daytime service, and doesn't run at night.

scheduled minutes between weekday trains
as of December 2008

	AM Rush	Noon	PM Rush	Overnight
W line	8	10	10	-
System Average	5:25	8:20	5:45	20

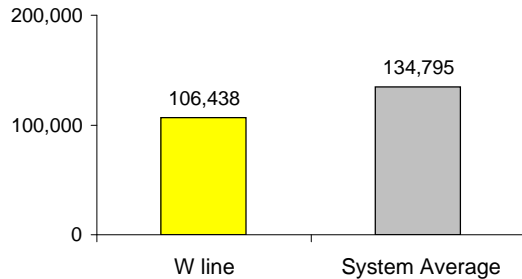
The W arrives with near-average regularity...

% of trains arriving at regular intervals (without gaps in service or train "bunching") between 6 am and midnight



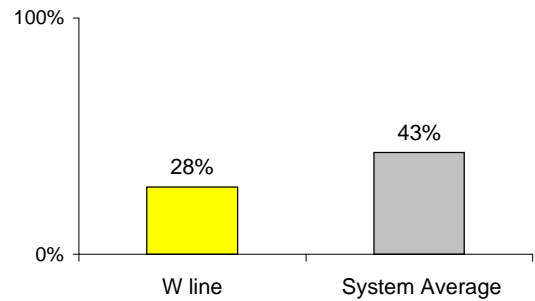
but its cars break down at a rate higher than those on the average line.

average miles traveled between delays caused by mechanical failures, 2008



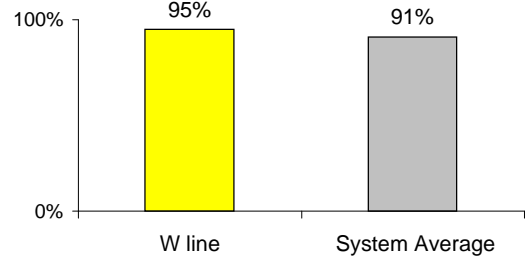
You're less likely to get a seat on the W.

% of passengers with seats at most crowded point during rush hour



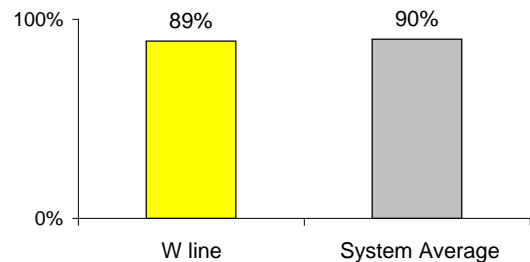
The W line cleaner than average...

% of cars with 'light or no interior dirtiness' as defined by NYC Transit



and performs near average on in-car announcements.

% of cars with correct announcements as defined by NYC Transit



Suggestions? Questions? Complaints? Call (718) 927-8511