

# Straphangers Campaign

## Q SUBWAY LINE PROFILE



Straphangers Campaign  
MetroCard Rating **\$1.25**

The Q line ranks 5th out of the 21 subway lines rated by the Straphangers Campaign. Our ranking is based on the MTA New York City Transit data below, using a method described at [www.straphangers.org](http://www.straphangers.org).

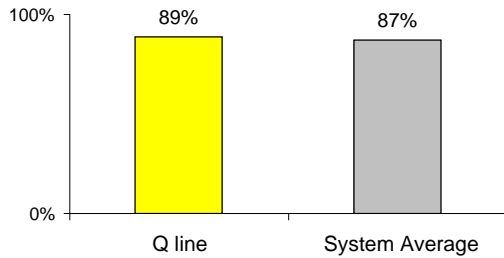
### The Q line is scheduled to come less often than the average line...

scheduled minutes between weekday trains  
as of December 2008

	AM Rush	Noon	PM Rush	Overnight
<b>Q line</b>	<b>6</b>	<b>10</b>	<b>6</b>	<b>20</b>
<b>System Average</b>	<b>5:25</b>	<b>8:20</b>	<b>5:45</b>	<b>20</b>

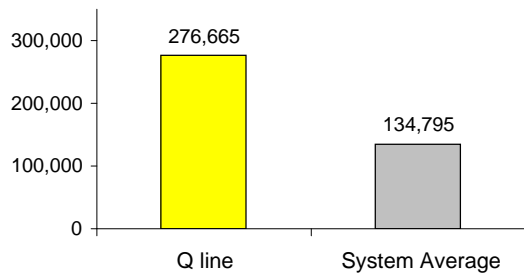
### and arrives with near-average regularity.

% of trains arriving at regular intervals (without gaps in service or train "bunching") between 6 am and midnight



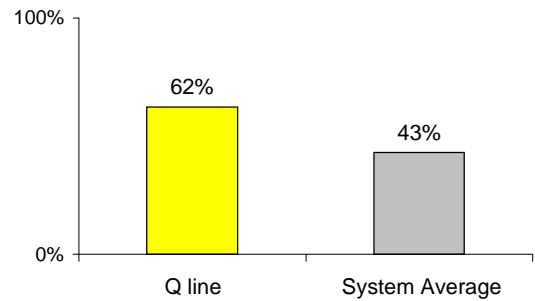
### Cars on the Q break down much less often than those on the average line.

average miles traveled between delays caused by mechanical failures, 2008



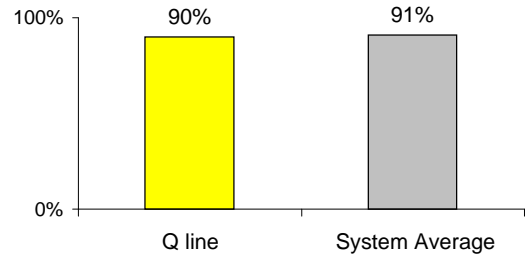
### You're more likely to get a seat on the Q.

% of passengers with seats at most crowded point during rush hour



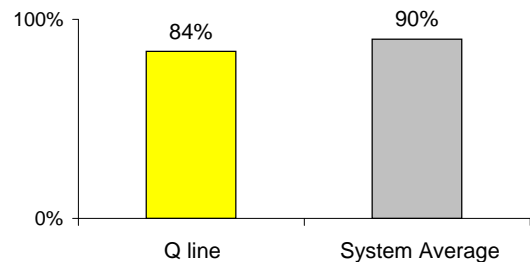
### The Q line has near-average cleanliness...

% of cars with 'light or no interior dirtiness' as defined by NYC Transit



### but performs below average on in-car announcements.

% of cars with correct announcements as defined by NYC Transit



**Suggestions? Questions? Complaints? Call (347) 643-5457**