

Straphangers Campaign

L SUBWAY LINE PROFILE



Straphangers Campaign
MetroCard Rating **\$1.50**

The L line ranks second best of the 21 subway lines rated by the Straphangers Campaign. Our ranking is based on the MTA New York City Transit data below, using a method described at www.straphangers.org.

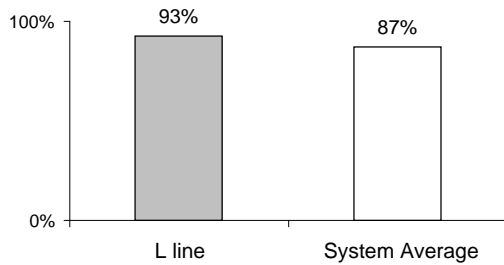
The L line is scheduled to come more often than most subway lines...

scheduled minutes between weekday trains as of December 2008

	AM Rush	Noon	PM Rush	Overnight
L line	3:30	6	4	20
System Average	5:25	8:20	5:45	20

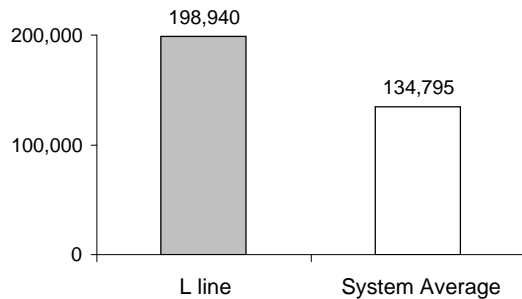
and arrives with regularity more often than any other line.

% of trains arriving at regular intervals (without gaps in service or train "bunching") between 6 am and midnight



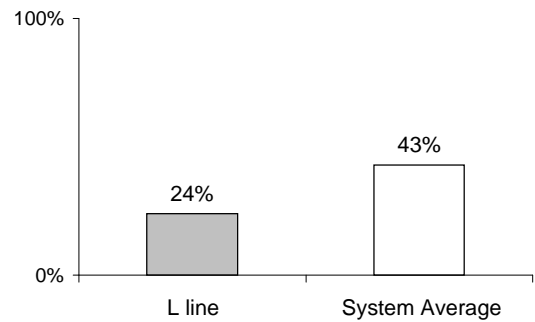
Cars on the L break down less often than those on the average line.

average miles traveled between delays caused by mechanical failures, 2008



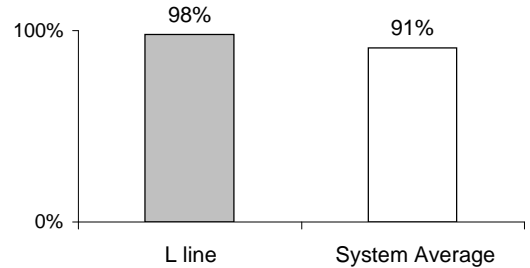
You're least likely to get a seat on the L.

% of passengers with seats at most crowded point during rush hour



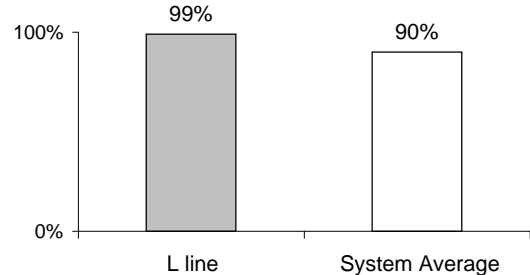
The L line is the system's cleanest...

% of cars with 'light or no interior dirtiness' as defined by NYC Transit



and performs nearly perfect on in-car announcements.

% of cars with correct announcements as defined by NYC Transit



Suggestions? Questions? Complaints? Call (718) 566-3710