

Straphangers Campaign

F SUBWAY LINE PROFILE



Straphangers Campaign MetroCard Rating 95¢

The F line ranks tied for 16th place out of the 21 subway lines rated by the Straphangers Campaign. Our ranking is based on the MTA New York City Transit data below, using a method described at www.straphangers.org.

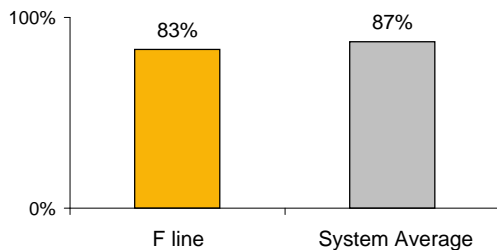
The F line is scheduled to come more often than most subway lines...

scheduled minutes between weekday trains as of December 2008

	AM Rush	Noon	PM Rush	Overnight
F line	4	7:30	4	20
System Average	5:25	8:20	5:45	20

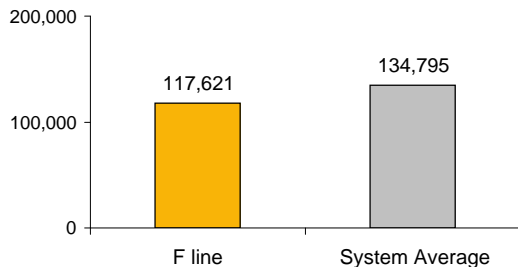
but arrives with below-average regularity.

% of trains arriving at regular intervals (without gaps in service or train "bunching") between 6 am and midnight



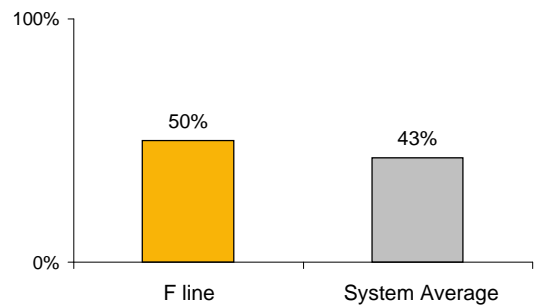
Cars on the F break down more often than those on the average line.

average miles traveled between delays caused by mechanical failures, 2008



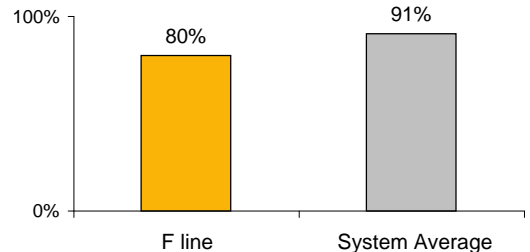
You're more likely to get a seat on the F.

% of passengers with seats at most crowded point during rush hour



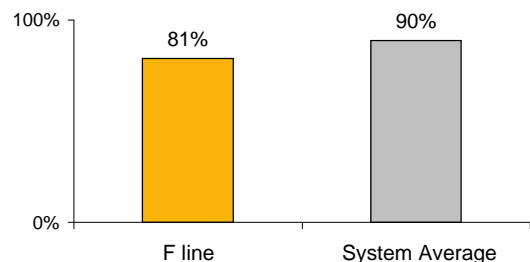
The F line is the least clean in the system...

% of cars with 'light or no interior dirtiness' as defined by NYC Transit



and performs below average on in-car announcements.

% of cars with correct announcements as defined by NYC Transit



Suggestions? Questions? Complaints? Call (347) 643-5451