

Straphangers Campaign

SUBWAY LINE PROFILE



Straphangers Campaign MetroCard Rating 50¢

The C line ranks the worst of the 21 subway lines rated by the Straphangers Campaign. Our ranking is based on the MTA New York City Transit data below, using a method described at www.straphangers.org.

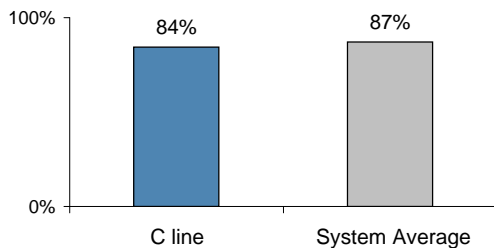
The C line has a below-average amount of daytime service, and doesn't run at night.

scheduled minutes between weekday trains
as of December 2008

	AM Rush	Noon	PM Rush	Overnight
C line	9:15	10	10	-
System Average	5:25	8:20	5:45	20

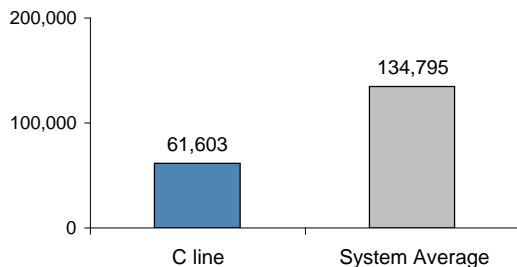
The C is less regular than average...

% of trains arriving at regular intervals (without gaps in service or train "bunching") between 6 am and midnight



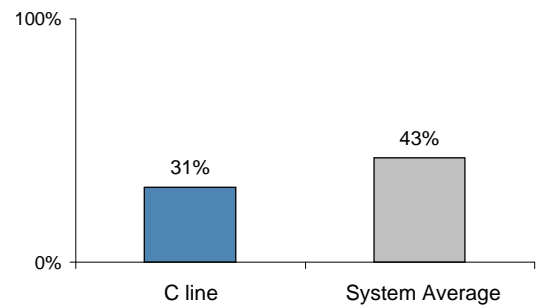
and its cars break down at a rate higher than any other line in the system.

average miles traveled between delays caused by mechanical failures, 2008



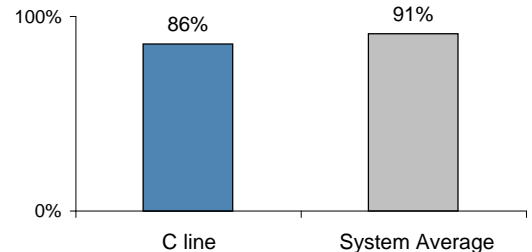
You're less likely to get a seat on the C.

% of passengers with seats at most crowded point during rush hour



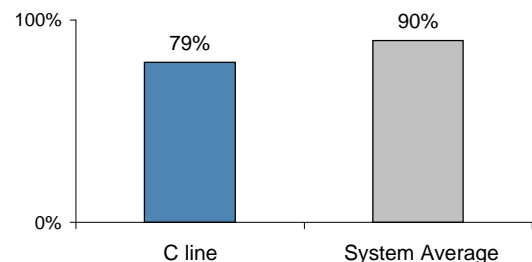
The C line is less clean than average...

% of cars with 'light or no interior dirtiness' as defined by NYC Transit



and performs below average on in-car announcements.

% of cars with correct announcements as defined by NYC Transit



Suggestions? Questions? Complaints? Call (718) 927-8511