

Straphangers Campaign

B SUBWAY LINE PROFILE



Straphangers Campaign MetroCard Rating 90¢

The B line ranks second worst out of the 21 subway lines rated by the Straphangers Campaign. Our ranking is based on the MTA New York City Transit data below, using a method described at www.straphangers.org.

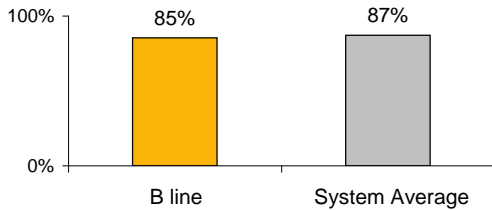
The B line has a below-average amount of daytime service and doesn't run at night.

scheduled minutes between weekday trains
as of December 2008

	AM Rush	Noon	PM Rush	Overnight
B line	7:15	10	8	-
System Average	5:25	8:20	5:45	20

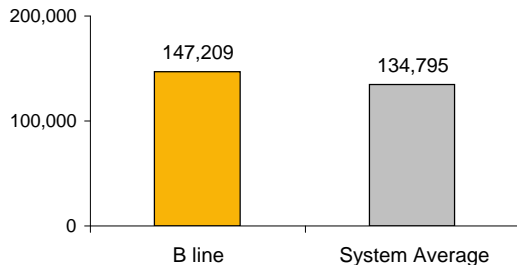
The B line arrives with near-average regularity...

% of trains arriving at regular intervals (without gaps in service or train "bunching") between 6 am and midnight



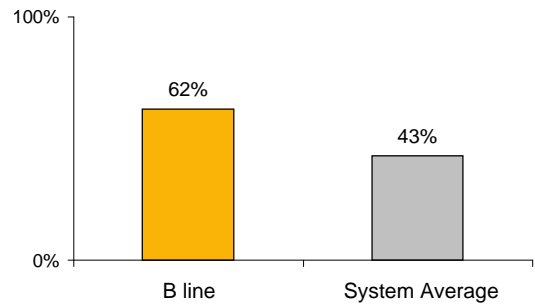
and its cars break down less often than those on the average line.

average miles traveled between delays caused by mechanical failures, 2008



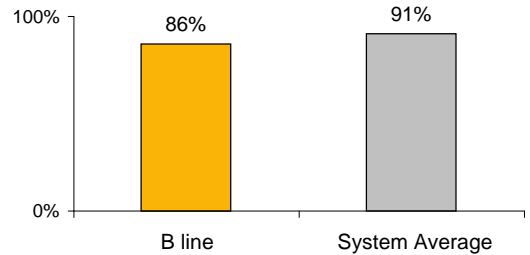
You're more likely to get a seat on the B.

% of passengers with seats at most crowded point during rush hour



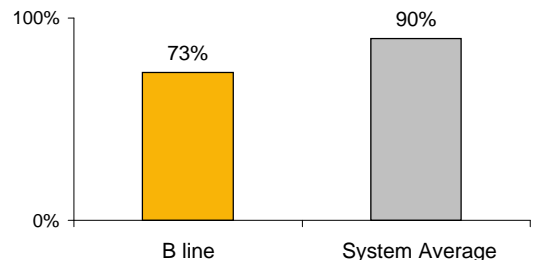
The B line is less clean than average...

% of cars with 'light or no interior dirtiness' as defined by NYC Transit



and performs worst on in-car announcements.

% of cars with correct announcements as defined by NYC Transit



Suggestions? Questions? Complaints? Call (212) 424-4515