

# Straphangers Campaign

## 1 SUBWAY LINE PROFILE



**Straphangers Campaign MetroCard Rating \$1.35**

The 1 line ranks 3rd best of the 21 subway lines rated by the Straphangers Campaign. Our ranking is based on the MTA New York City Transit data below, using a method described at [www.straphangers.org](http://www.straphangers.org).

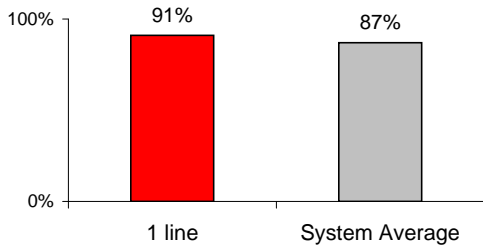
### The 1 line is scheduled to come more often than most subway lines...

scheduled minutes between weekday trains as of December 2008

	AM Rush	Noon	PM Rush	Overnight
<b>1 line</b>	<b>3</b>	<b>5</b>	<b>3:30</b>	<b>20</b>
<b>System Average</b>	<b>5:25</b>	<b>8:20</b>	<b>5:45</b>	<b>20</b>

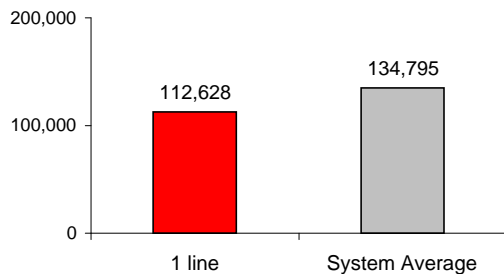
### and arrives with above-average regularity.

% of trains arriving at regular intervals (without gaps in service or train "bunching") between 6 am and midnight



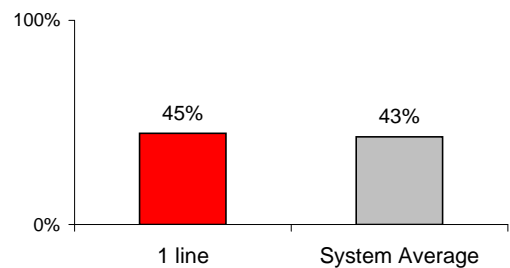
### Cars on the 1 line break down more often than those on the average line.

average miles traveled between delays caused by mechanical failures, 2008



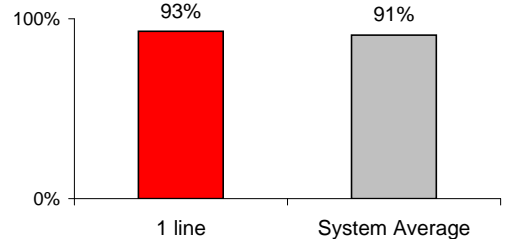
### You're more likely to get a seat on the 1 line.

% of passengers with seats at most crowded point during rush hour



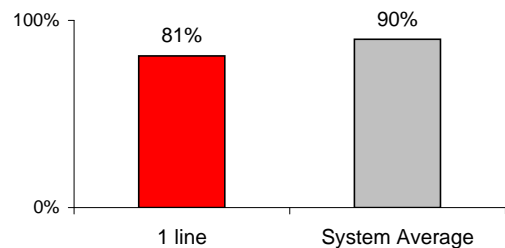
### The 1 line has near-average cleanliness...

% of cars with 'light or no interior dirtiness' as defined by NYC Transit



### but performs below average on in-car announcements.

% of cars with correct announcements as defined by NYC Transit



**Suggestions? Questions? Complaints? Call (212) 424-5291**