

# Straphangers Campaign

## W SUBWAY LINE PROFILE



Straphangers Campaign MetroCard Rating **70¢**

The W line ranks worst of the 21 subway lines rated by the Straphangers Campaign. Our ranking is based on the MTA New York City Transit data below, using a method described at [www.straphangers.org](http://www.straphangers.org).

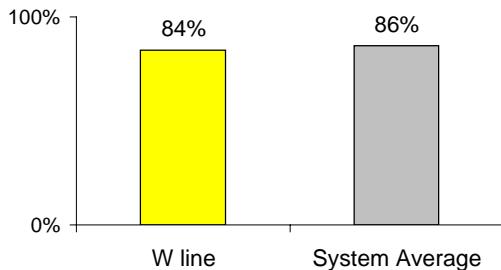
### The W has the least amount of daytime service, and doesn't run at night.

scheduled minutes between weekday trains as of December 2007

	AM Rush	Noon	PM Rush	Overnight
<b>W line</b>	<b>10</b>	<b>10</b>	<b>10</b>	<b>-</b>
<b>System Average</b>	<b>5:33</b>	<b>8:20</b>	<b>5:45</b>	<b>20</b>

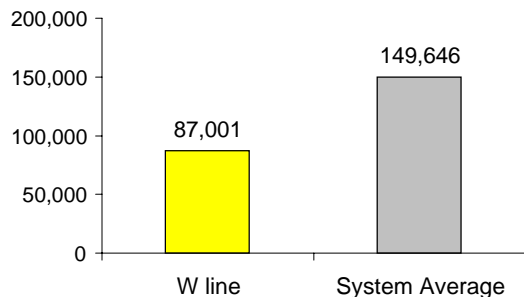
### The W arrives with below-average regularity...

% of trains arriving at regular intervals (without gaps in service or train "bunching") between 6 am and 9 pm



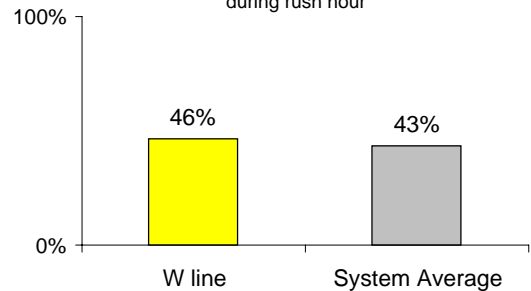
### and its cars break down more often than those on the average line.

average miles traveled between delays caused by mechanical failures, 2007



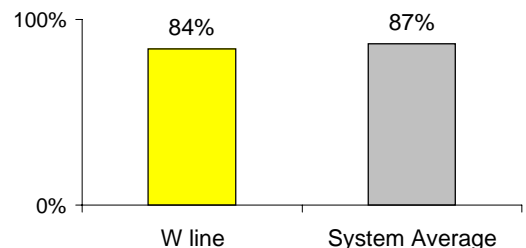
### You're more likely to get a seat on the W.

% of passengers with seats at most crowded point during rush hour



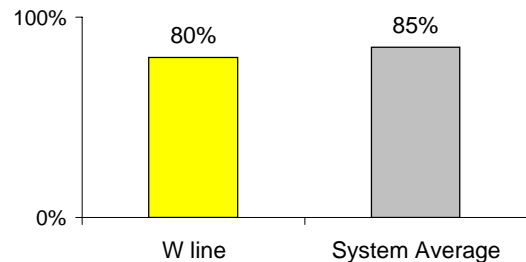
### The W line is less clean than average...

% of cars with 'light or no interior dirtiness' as defined by NYC Transit



### and performs below average on in-car announcements.

% of cars with correct announcements as defined by NYC Transit



**Suggestions? Questions? Complaints? Call (718) 927-8511**