

Straphangers Campaign

1 SUBWAY LINE PROFILE



Straphangers Campaign MetroCard Rating \$1.20

The 1 line ranks tied for 4th place out of the 21 subway lines rated by the Straphangers Campaign. Our ranking is based on the MTA New York City Transit data below, using a method described at www.straphangers.org.

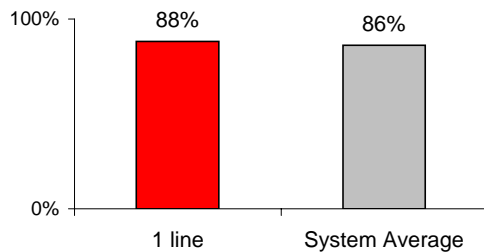
The 1 line is scheduled to come much more often than most subway lines...

scheduled minutes between weekday trains as of December 2007

	AM Rush	Noon	PM Rush	Overnight
1 line	3	5	3:30	20
System Average	5:33	8:20	5:45	20

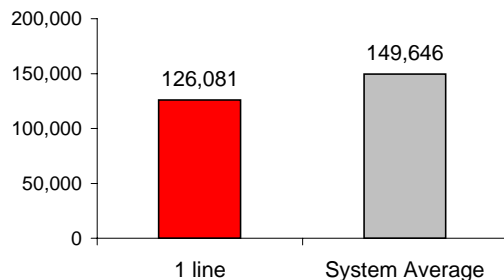
and arrives with above-average regularity.

% of trains arriving at regular intervals (without gaps in service or train "bunching") between 6 am and 9 pm



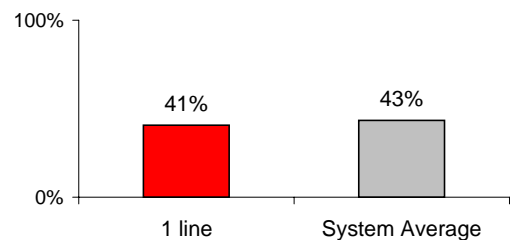
Cars on the 1 line break down more often than those on the average line.

average miles traveled between delays caused by mechanical failures, 2007



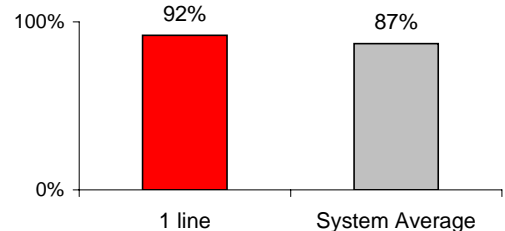
You're less likely to get a seat on the 1 line.

% of passengers with seats at most crowded point during rush hour



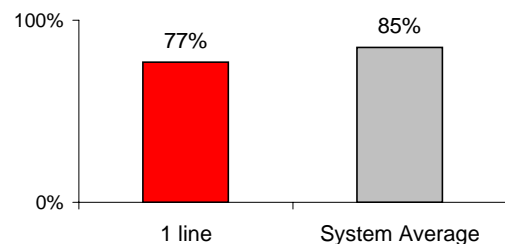
The 1 line is cleaner than average...

% of cars with 'light or no interior dirtiness' as defined by NYC Transit



but performs below average on in-car announcements.

% of cars with correct announcements as defined by NYC Transit



Suggestions? Questions? Complaints? Call (212) 424-5363