

Straphangers Campaign



SUBWAY LINE PROFILE

The M line ranks 19th out of the 22 subway lines rated by the Straphangers Campaign. Our ranking is based on the MTA New York City Transit data below, using a method described at www.straphangers.org.



Straphangers Campaign
MetroCard Rating

85¢

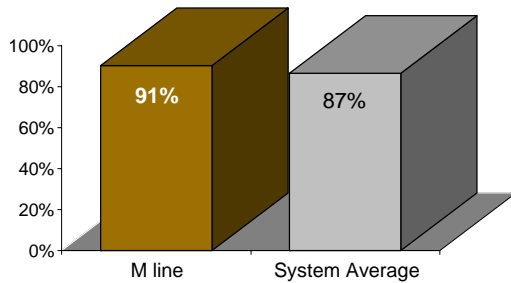
The M is tied for the least amount of scheduled service...

scheduled minutes between weekday trains
as of December 2006

	AM Rush	Noon	PM Rush	Overnight
M line	10	10	10	20
System Average	5:34	8:26	5:46	20

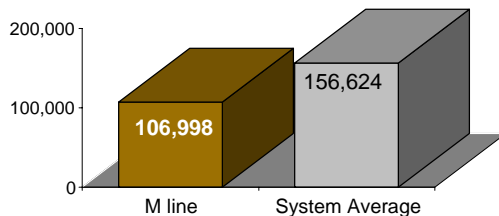
but arrives with above-average regularity.

% of trains arriving at regular intervals
(without gaps in service or train "bunching")
between 6 a.m. and 9 p.m.



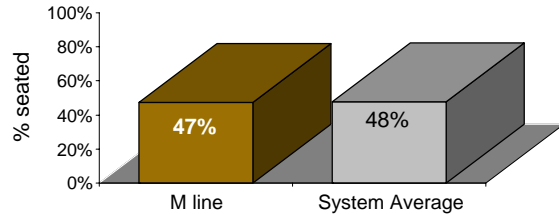
Cars on the M line break down more often than those on the average line.

average miles traveled between delay:
caused by mechanical failures, 2006



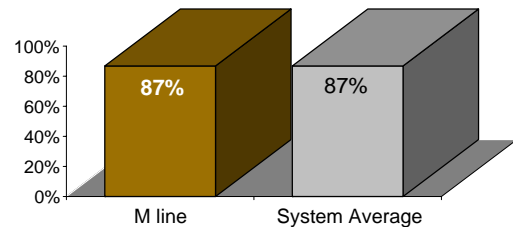
You're slightly less likely to get a seat on the M line.

% of passengers with seats at most crowded point
during rush hour



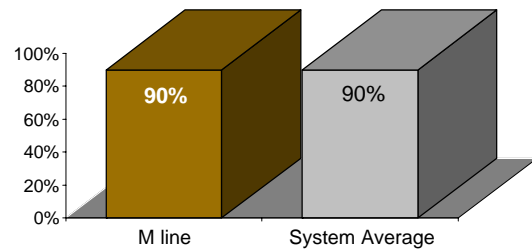
The M is as clean as the average line...

% of cars with 'light or no interior dirtiness'
as defined by NYC Transit



and also performs at the system average on in-car announcements.

% of cars with correct announcements
(as defined by NYC Transit)



Suggestions? Complaints? Call the M line superintendent at (718) 927-7290.