

Straphangers Campaign



SUBWAY LINE PROFILE

The L line ranks 2nd place out of the 22 subway lines rated by the Straphangers Campaign. Our ranking is based on the MTA New York City Transit data below, using a method described at www.straphangers.org.



Straphangers Campaign MetroCard Rating \$1.20

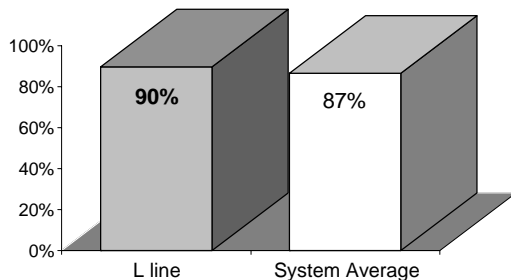
The L line is scheduled to come more often than most subway lines...

scheduled minutes between weekday trains as of December 2006

	AM Rush	Noon	PM Rush	Overnight
L line	4	8	4	20
System Average	5:34	8:26	5:46	20

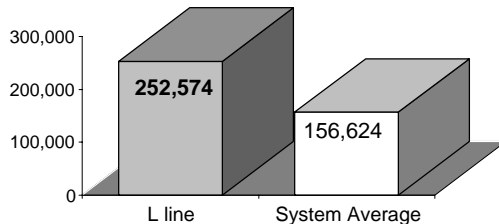
and arrives with above-average regularity.

% of trains arriving at regular intervals (without gaps in service or train "bunching") between 6 a.m. and 9 p.m.



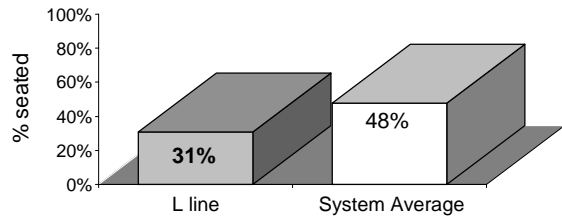
Cars on the L line break down less often than those on the average line.

average miles traveled between delay: caused by mechanical failures, 2006



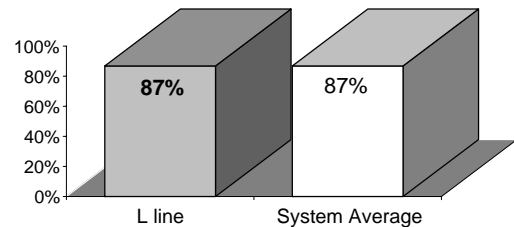
You're much less likely to get a seat on the L line.

% of passengers with seats at most crowded point during rush hour



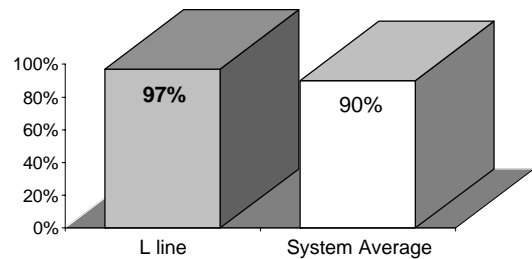
The L is as clean as the average line...

% of cars with 'light or no interior dirtiness' as defined by NYC Transit



and performs much better than average on in-car announcements.

% of cars with correct announcements (as defined by NYC Transit)



Suggestions? Complaints? Call the L line superintendent at (347) 694-1056.