

# Straphangers Campaign

## J/Z SUBWAY LINE PROFILE



**Straphangers Campaign MetroCard Rating \$1.00**

The J/Z lines rank tied for 8th place out of the 22 subway lines rated by the Straphangers Campaign. Our ranking is based on the MTA New York City Transit data below, using a method described at [www.straphangers.org](http://www.straphangers.org).

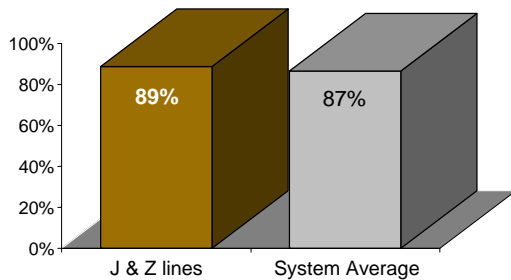
### The J & Z lines have more rush hour and less midday service than the average line...

scheduled minutes between weekday trains as of December 2006

	AM Rush	Noon	PM Rush	Overnight
<b>J &amp; Z lines</b>	<b>5</b>	<b>10</b>	<b>5</b>	<b>20</b>
<b>System Average</b>	<b>5:34</b>	<b>8:26</b>	<b>5:46</b>	<b>20</b>

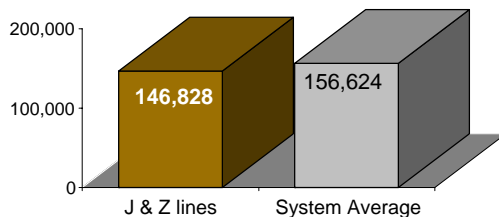
### but arrives with above-average regularity.

% of trains arriving at regular intervals (without gaps in service or train "bunching") between 6 a.m. and 9 p.m.



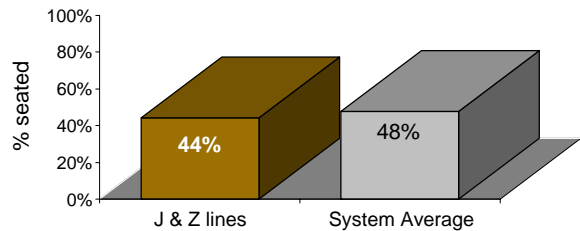
### Cars on the J & Z break down more often than those on the average line.

average miles traveled between delay: caused by mechanical failures, 2006



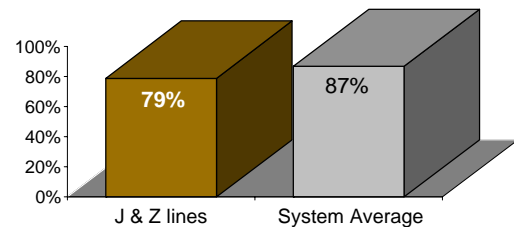
### You're less likely to get a seat on the J & Z lines.

% of passengers with seats at most crowded point during rush hour



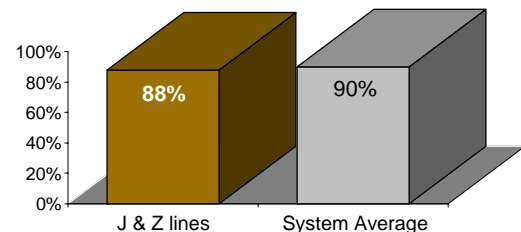
### The J & Z lines are less clean than average...

% of cars with 'light or no interior dirtiness' as defined by NYC Transit



### and perform below average on in-car announcements.

% of cars with correct announcements (as defined by NYC Transit)



**Suggestions? Complaints? Call the J & Z lines superintendent at (718) 927-7290.**