

# Straphangers Campaign



## SUBWAY LINE PROFILE

The F line ranks tied for 15th place out of the 22 subway lines rated by the Straphangers Campaign. Our ranking is based on the MTA New York City Transit data below, using a method described at [www.straphangers.org](http://www.straphangers.org).



Straphangers Campaign  
MetroCard Rating

90¢

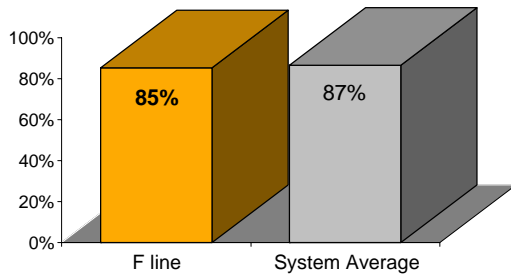
### The F line has an above-average amount of scheduled service...

scheduled minutes between weekday trains  
as of December 2006

	AM Rush	Noon	PM Rush	Overnight
<b>F line</b>	<b>4</b>	<b>7:30</b>	<b>4</b>	<b>20</b>
<b>System Average</b>	<b>5:34</b>	<b>8:26</b>	<b>5:46</b>	<b>20</b>

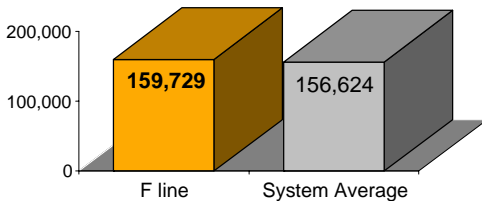
### but arrives with below-average regularity.

% of trains arriving at regular intervals  
(without gaps in service or train "bunching")  
between 6 a.m. and 9 p.m.



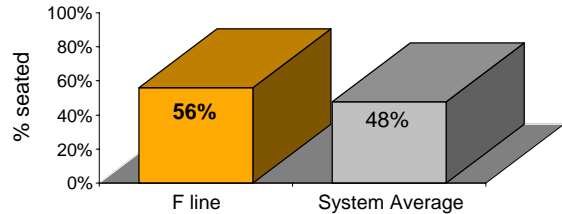
### Cars on the F break down at a rate near those on the average line.

average miles traveled between delay:  
caused by mechanical failures, 2006



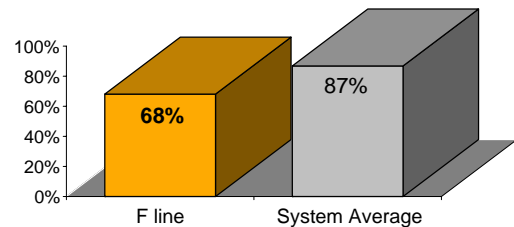
### You're more likely to get a seat on the F line.

% of passengers with seats at most crowded point  
during rush hour



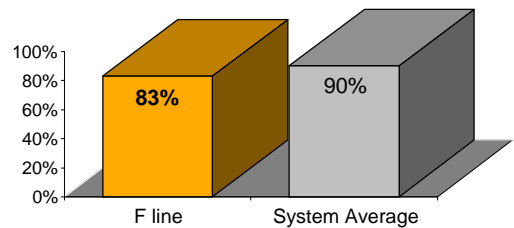
### The F line is the system's dirtiest...

% of cars with 'light or no interior dirtiness'  
as defined by NYC Transit



### and performs below average on in-car announcements.

% of cars with correct announcements  
(as defined by NYC Transit)



**Suggestions? Complaints? Call the F line superintendent at (347) 643-5451.**