

Straphangers Campaign

B SUBWAY LINE PROFILE

The B line ranks 20th out of the 22 subway lines rated by the Straphangers Campaign. Our ranking is based on the MTA New York City Transit data below, using a method described at www.straphangers.org.



Straphangers Campaign MetroCard Rating **80¢**

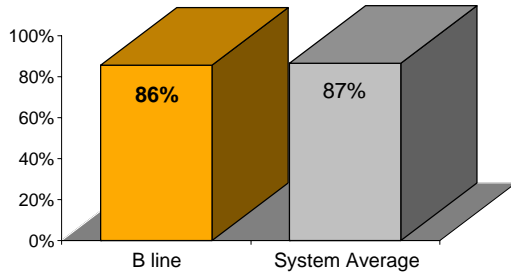
The B line has a below-average amount of service, and it doesn't run at night.

scheduled minutes between weekday trains
as of December 2006

	AM Rush	Noon	PM Rush	Overnight
B line	8	10	8	-
System Average	5:34	8:26	5:46	20

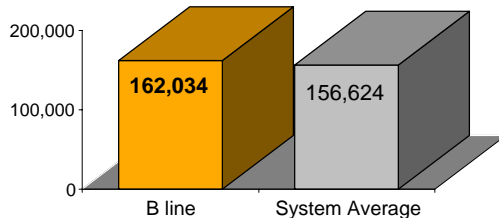
The B arrives with below-average regularity...

% of trains arriving at regular intervals
(without gaps in service or train "bunching")
between 6 a.m. and 9 p.m.



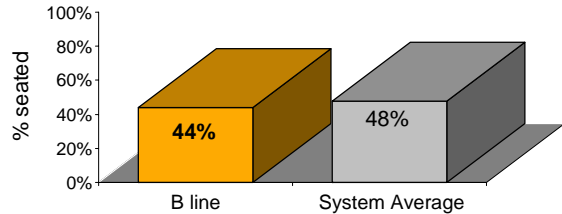
but its cars break down less often than those on the average line.

average miles traveled between delay:
caused by mechanical failures, 2006



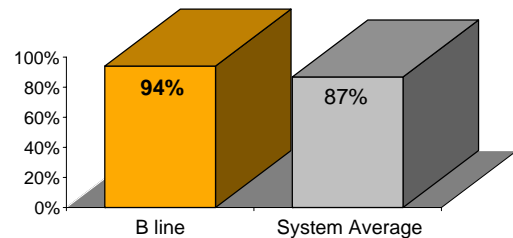
You're less likely to get a seat on the B line.

% of passengers with seats at most crowded point
during rush hour



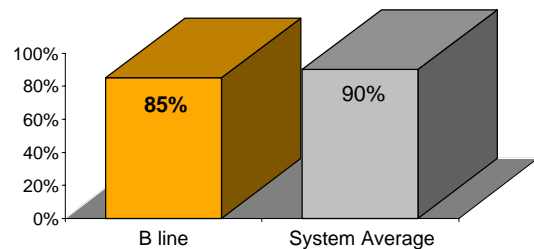
The B is the system's cleanest line...

% of cars with 'light or no interior dirtiness'
as defined by NYC Transit



but performs below average on in-car announcements.

% of cars with correct announcements
(as defined by NYC Transit)



Suggestions? Complaints? Call the B line superintendent at (212) 424-4515.