

Straphangers Campaign

A SUBWAY LINE PROFILE



Straphangers Campaign MetroCard Rating 95¢

The A line ranks tied for 12th place out of the 22 subway lines rate by the Straphangers Campaign. Our ranking is based on the MTA New York City Transit data below, using a method described at www.straphangers.org.

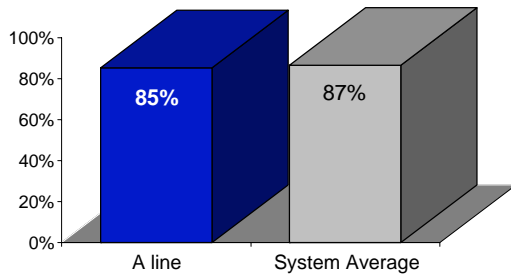
The A line is scheduled to come more often than most subway lines...

scheduled minutes between weekday trains as of December 2006

	AM Rush	Noon	PM Rush	Overnight
A line	4:45	7:30	4:45	20
System Average	5:34	8:26	5:46	20

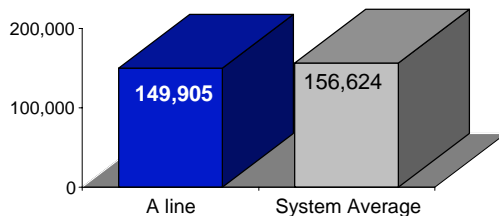
but arrives with below-average regularity.

% of trains arriving at regular intervals (without gaps in service or train "bunching") between 6 a.m. and 9 p.m.



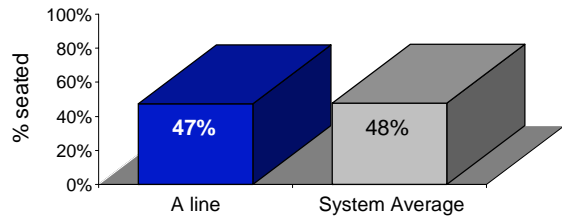
Cars on the A line break down more often than those on the average line.

average miles traveled between delay: caused by mechanical failures, 2006



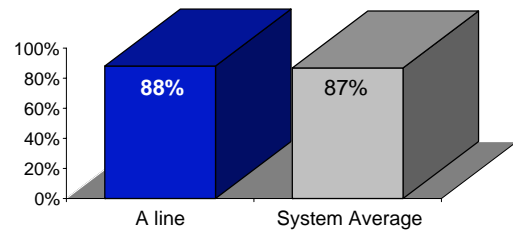
You're slightly less likely to get a seat on the A line.

% of passengers with seats at most crowded point during rush hour



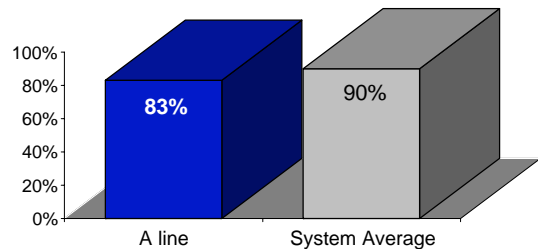
The A line is cleaner than average...

% of cars with 'light or no interior dirtiness' as defined by NYC Transit



but performs below average on in-car announcements.

% of cars with correct announcements (as defined by NYC Transit)



Suggestions? Complaints? Call the A line superintendent at (212) 712-3704.