

# Straphangers Campaign

## 1 SUBWAY LINE PROFILE



Straphangers Campaign  
MetroCard Rating **\$1.25**

The 1 line ranks best of the 22 subway lines rated by the Straphangers Campaign. Our ranking is based on the MTA New York City Transit data below, using a method described at [www.straphangers.org](http://www.straphangers.org).

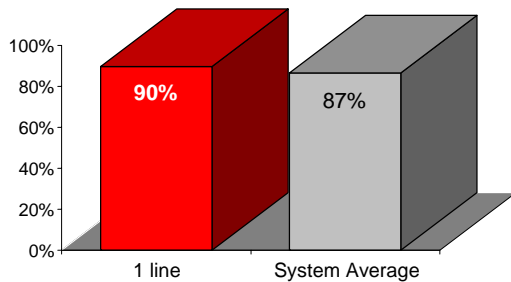
### The 1 line is scheduled to come much more often than most subway lines...

scheduled minutes between weekday trains  
as of February 2007

	AM Rush	Noon	PM Rush	Overnight
<b>1 line</b>	<b>3</b>	<b>5</b>	<b>3:30</b>	<b>20</b>
<b>System Average</b>	<b>5:34</b>	<b>8:26</b>	<b>5:46</b>	<b>20</b>

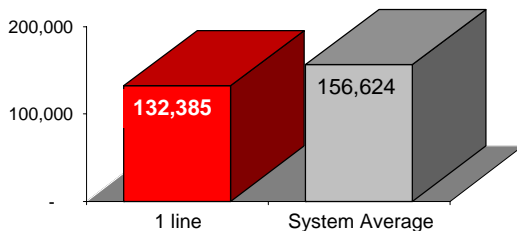
### and arrives with above-average regularity.

% of trains arriving at regular intervals  
(without gaps in service or train "bunching")  
between 6 a.m. and 9 p.m.



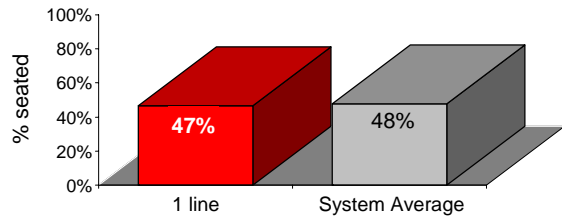
### Cars on the 1 line break down more often than those on the average line.

average miles traveled between delay:  
caused by mechanical failures, 2006



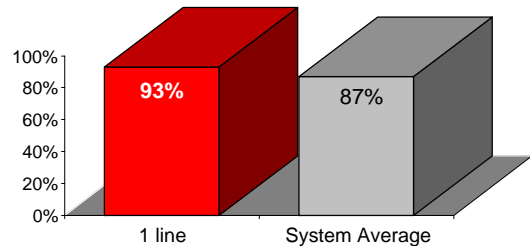
### You're slightly less likely to get a seat on the 1 line.

% of passengers with seats at most crowded point  
during rush hour



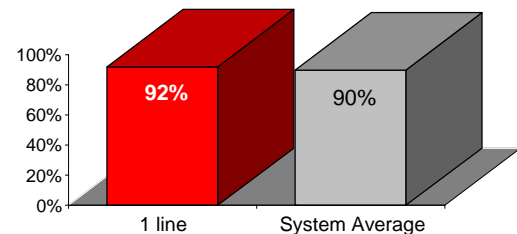
### The 1 line is cleaner than average...

% of cars with 'light or no interior dirtiness'  
as defined by NYC Transit



### and performs above the system average on in-car announcements.

% of cars with correct announcements  
(as defined by NYC Transit)



**Suggestions? Complaints? Call the 1 line superintendent at (212) 704-0537.**