

Straphangers Campaign



SUBWAY LINE PROFILE



Straphangers Campaign
MetroCard Rating

75¢

The W line ranks tied for worst out of the 22 subway lines rated by the Straphangers Campaign. Our ranking is based on the MTA New York City Transit data below, using a method described at www.straphangers.org.

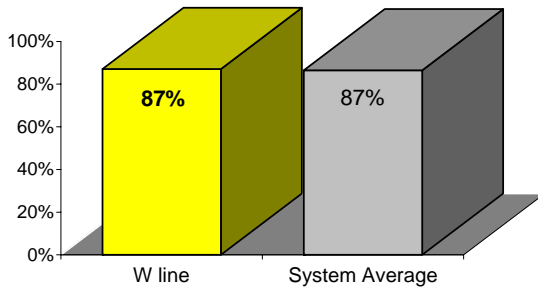
The W line has the least amount of daytime service, and it doesn't run at night.

scheduled minutes between weekday trains
as of January 2006

	AM Rush	Noon	PM Rush	Overnight
W line	10	10	10	-
System Average	5:33	8:26	5:48	20

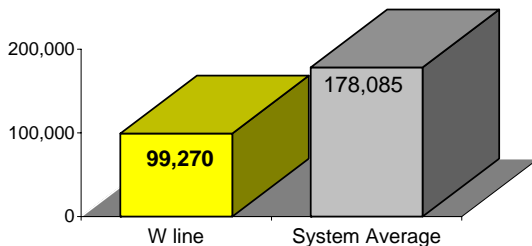
The W line arrives with average regularity...

% of trains arriving at regular intervals
(without gaps in service or train "bunching")
between 6 a.m. and 9 p.m.



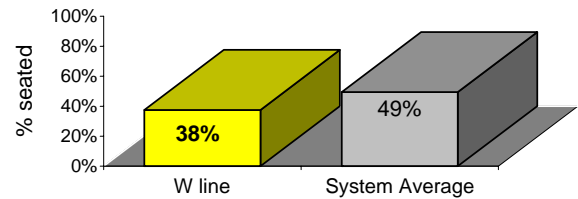
but its cars break down at a rate much higher than those on the average line.

average miles traveled between delays
caused by mechanical failures, 2005



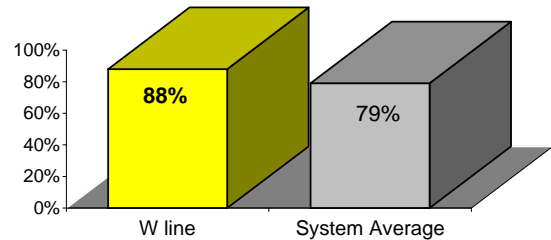
You have a below-average chance of getting a seat on the W.

% of passengers with seats at most crowded point
during rush hour



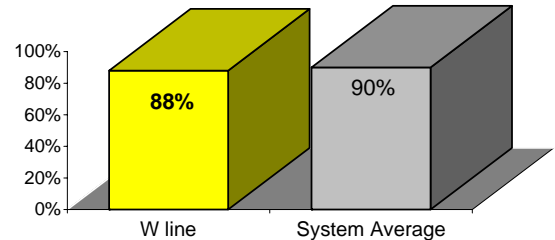
The W line is cleaner than average...

% of cars with 'light or no interior dirtiness'
as defined by NYC Transit



but performs below average on in-car announcements.

% of cars with correct announcements
(as defined by NYC Transit)



Suggestions? Complaints? Call the W line superintendent at (718) 714-3981.