

Straphangers Campaign

N SUBWAY LINE PROFILE

The N line ranks tied for worst out of the 22 subway lines rated by the Straphangers Campaign. Our ranking is based on the MTA New York City Transit data below, using a method described at www.straphangers.org.



Straphangers Campaign MetroCard Rating **75¢**

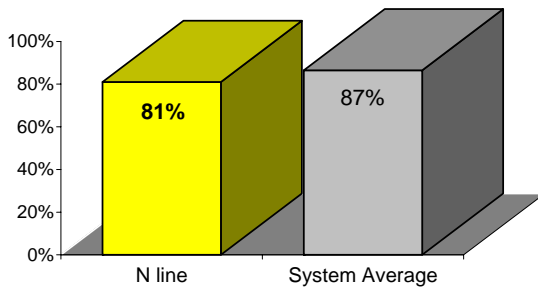
The N line has a below-average amount of scheduled service...

scheduled minutes between weekday trains
as of January 2006

	AM Rush	Noon	PM Rush	Overnight
N line	8	10	8	20
System Average	5:33	8:26	5:48	20

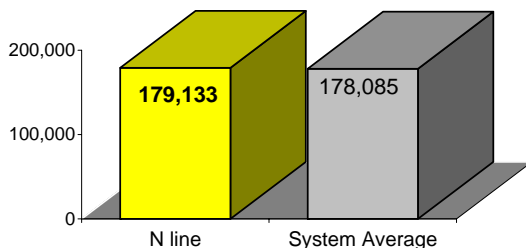
and it arrives with regularity less often than the average line.

% of trains arriving at regular intervals
(without gaps in service or train "bunching")
between 6 a.m. and 9 p.m.



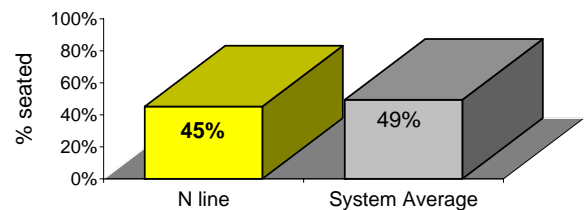
Cars on the N break down at about the system average.

average miles traveled between delays
caused by mechanical failures, 2005



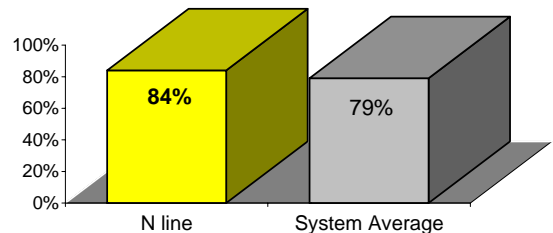
You're less likely to get a seat on the N line.

% of passengers with seats at most crowded point
during rush hour



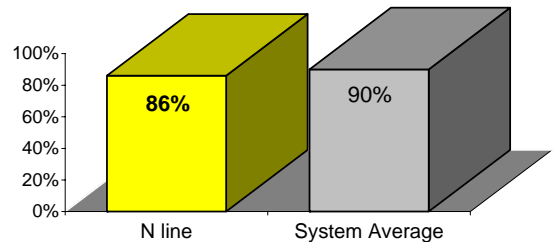
The N line is cleaner than average...

% of cars with 'light or no interior dirtiness'
as defined by NYC Transit



but performs below average on in-car announcements.

% of cars with correct announcements
(as defined by NYC Transit)



Suggestions? Complaints? Call the N line superintendent at (718) 521-7036.