

Straphangers Campaign

M SUBWAY LINE PROFILE



The M line ranks tied for 19th out of the 22 subway lines rated by the Straphangers Campaign. Our ranking is based on the MTA New York City Transit data below, using a method described at www.straphangers.org.

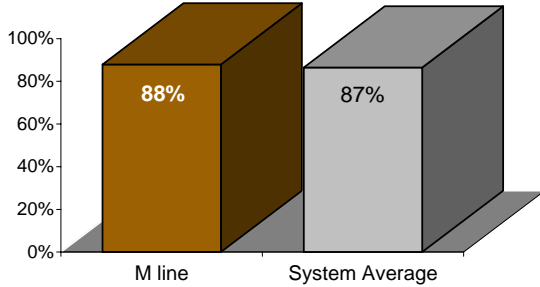
The M line is scheduled to come much less often than most subway lines. . .

scheduled minutes between weekday trains as of January 2006

| | AM Rush | Noon | PM Rush | Overnight |
|-----------------------|-------------|-------------|-------------|-----------|
| M line | 10 | 10 | 9:30 | 20 |
| System Average | 5:33 | 8:26 | 5:48 | 20 |

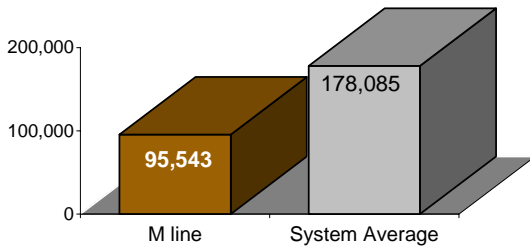
but arrives with above-average regularity.

% of trains arriving at regular intervals (without gaps in service or train "bunching") between 6 a.m. and 9 p.m.



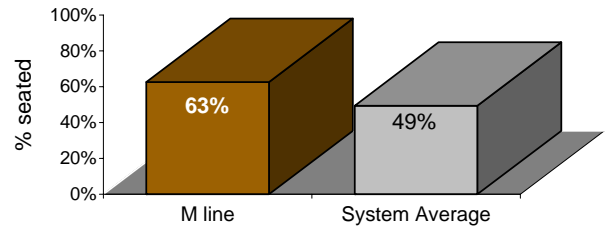
Cars on the M line break down much more often than those on the average line.

average miles traveled between delays caused by mechanical failures, 2005



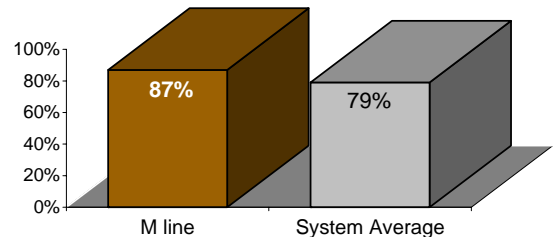
You're more likely to get a seat on the M line.

% of passengers with seats at most crowded point during rush hour



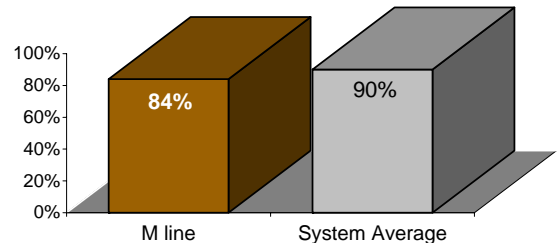
The M line is cleaner than average...

% of cars with 'light or no interior dirtiness' as defined by NYC Transit



but performs below average on in-car announcements.

% of cars with correct announcements (as defined by NYC Transit)



Suggestions? Complaints? Call the M line superintendent at (718) 927-7290.