

Straphangers Campaign

G SUBWAY LINE PROFILE



Straphangers Campaign MetroCard Rating 95¢

The G line ranks tied for 14th place out of the 22 subway lines rated by the Straphangers Campaign. Our ranking is based on MTA New York City Transit data, plus the results of a Straphangers Campaign G line ridership study. Methodology is described at www.straphangers.org.

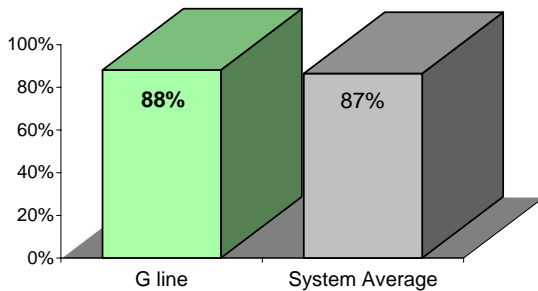
The G line is scheduled to come less often than most subway lines. . .

scheduled minutes between weekday trains as of January 2006

	AM Rush	Noon	PM Rush	Overnight
G line	7	10	8	20
System Average	5:33	8:26	5:48	20

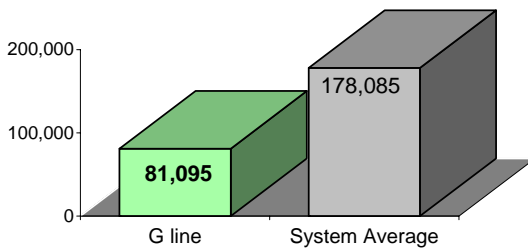
but arrives with above-average regularity.

% of trains arriving at regular intervals (without gaps in service or train "bunching") between 6 a.m. and 9 p.m.

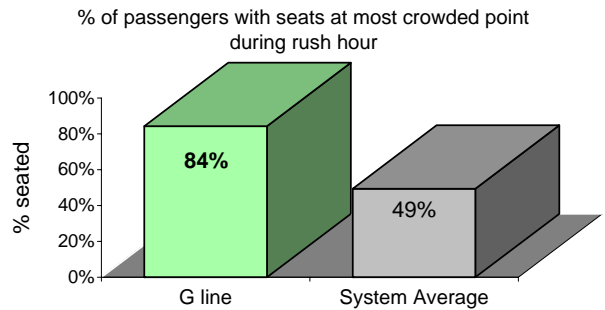


Cars on the G break down at the highest rate of all lines in this report.

average miles traveled between delays caused by mechanical failures, 2005

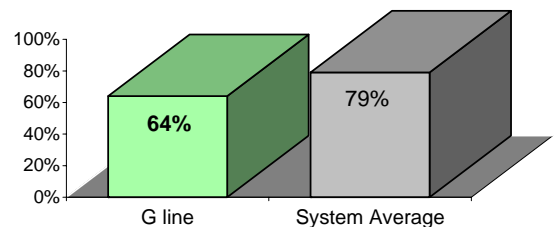


You're much more likely to get a seat on the G line.



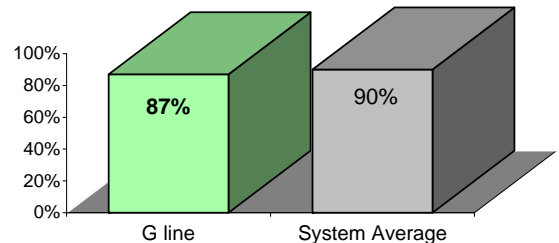
The G line is less clean than average...

% of cars with 'light or no interior dirtiness' as defined by NYC Transit



and performs below average on in-car announcements.

% of cars with correct announcements (as defined by NYC Transit)



Suggestions? Complaints? Call the G line superintendent at (718) 334-8190.