

Straphangers Campaign



SUBWAY LINE PROFILE

The 1 line ranks tied for 5th place out of the 22 subway lines rated by the Straphangers Campaign. Our ranking is based on the MTA New York City Transit data below, using a method described at www.straphangers.org.



Straphangers Campaign MetroCard Rating \$1.10

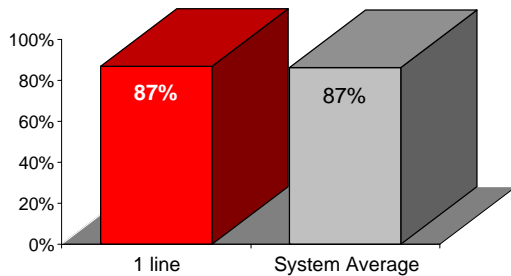
The 1 line is scheduled to come much more often than most subway lines. . .

scheduled minutes between weekday trains as of January 2006

	AM Rush	Noon	PM Rush	Overnight
1 line	3	5	4	20
System Average	5:33	8:26	5:48	20

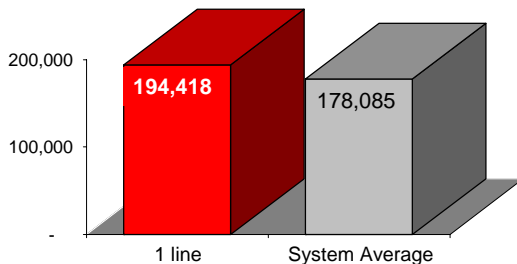
and arrives with average regularity.

% of trains arriving at regular intervals (without gaps in service or train "bunching") between 6 a.m. and 9 p.m.



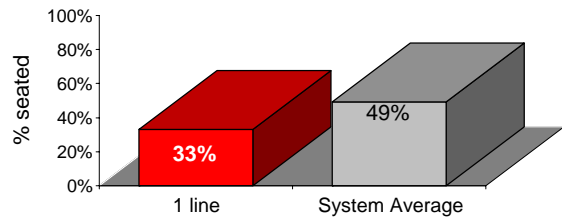
Cars on the 1 line break down less often than those on the average line.

average miles traveled between delay: caused by mechanical failures, 2005



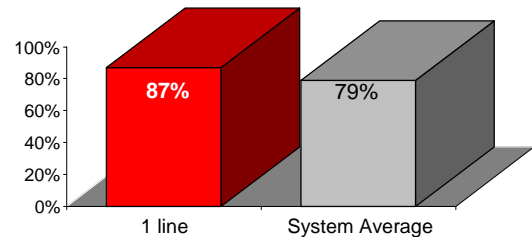
You're much less likely to get a seat on the 1 line.

% of passengers with seats at most crowded point during rush hour



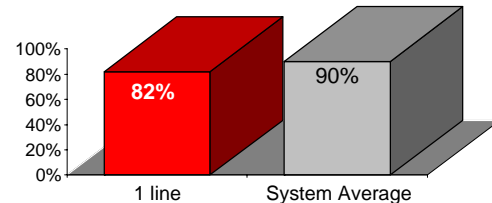
The 1 line is cleaner than average...

% of cars with 'light or no interior dirtiness' as defined by NYC Transit



but performs poorly on in-car announcements.

% of cars with correct announcements (as defined by NYC Transit)



Suggestions? Complaints? Call the 1 & 9 lines superintendent at (212) 704-0537.