

Straphangers Campaign

W SUBWAY LINE PROFILE



Straphangers Campaign MetroCard Rating 75¢

The W line ranks tied for 18th place out of the 21 subway lines rated by the Straphangers Campaign in 2005. Our ranking is based on the MTA New York City Transit data below, using a method described at www.straphangers.org.

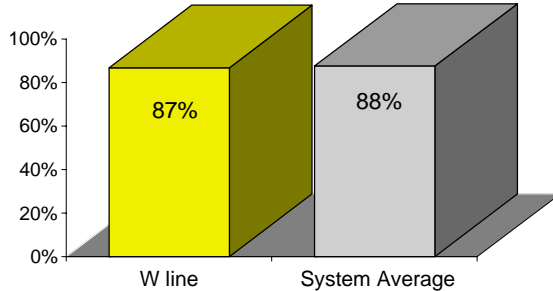
The W has less-than-average service, and doesn't run at night.

scheduled minutes between weekday trains as of February 2004

	AM Rush	Noon	PM Rush	Overnight
W line	10	10	9	-
System Average	5:43	8:26	5:55	20

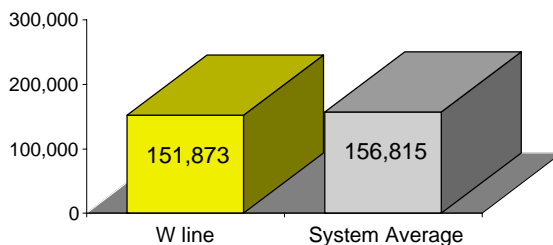
The W line arrives with below-average regularity. . .

% of trains arriving at regular intervals (without gaps in service or train "bunching") between 6 a.m. and 9 p.m.



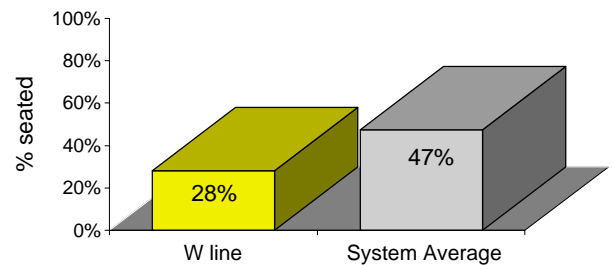
and its cars break down at a higher rate than the system average.

average miles traveled between delay caused by mechanical failures, 2004



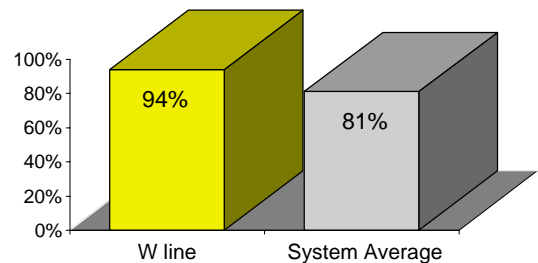
Your chance of getting a seat on the W is next to worst.

% of passengers with seats at most crowded point during rush hour



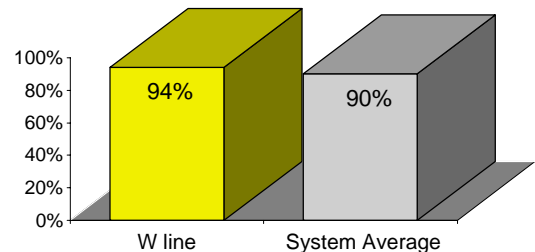
The W is tied for the cleanest line. . .

% of cars with 'light or no interior dirtiness' as defined by NYC Transit



and performs above-average on in-car announcements.

% of cars with correct announcements (as defined by NYC Transit)



Suggestions? Complaints? Call the W line superintendent at (718) 521-3507.