

# Straphangers Campaign

## Q SUBWAY LINE PROFILE



Straphangers Campaign  
MetroCard Rating **\$1.00**

The Q line ranks tied for 7th place out of the 21 subway line rated by the Straphangers Campaign in 2005. Our ranking is based on the MTA New York City Transit data below, using a method described at [www.straphangers.org](http://www.straphangers.org).

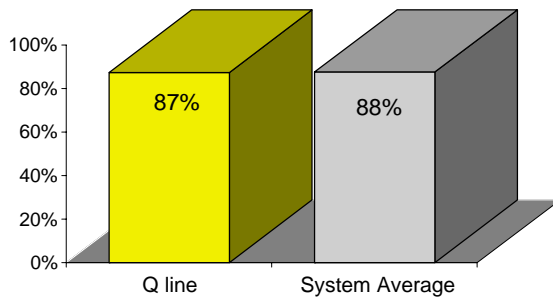
### The Q has less scheduled service than the average line. . .

scheduled minutes between weekday trains as of February 2004

	AM Rush	Noon	PM Rush	Overnight
<b>Q line</b>	<b>6:30</b>	<b>10</b>	<b>6:30</b>	<b>20</b>
<b>System Average</b>	<b>5:43</b>	<b>8:26</b>	<b>5:55</b>	<b>20</b>

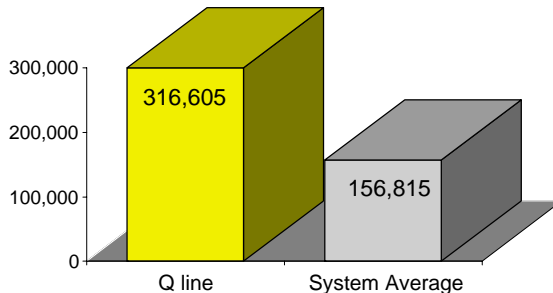
### and arrives with below-average regularity.

% of trains arriving at regular intervals (without gaps in service or train "bunching") between 6 a.m. and 9 p.m.



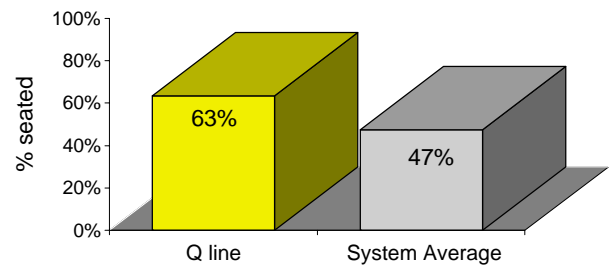
### Cars on the Q break down much less frequently than those on the average line.

average miles traveled between delay caused by mechanical failures, 2004



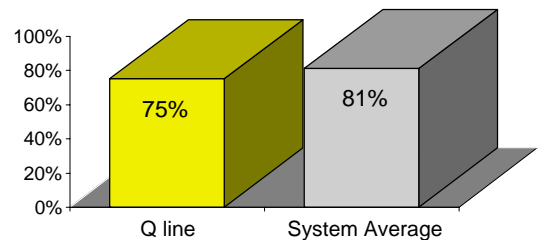
### You have a better-than-average chance of getting a seat on the Q.

% of passengers with seats at most crowded point during rush hour



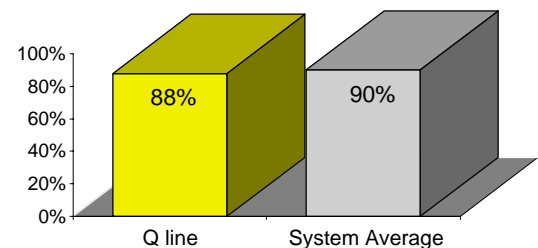
### The Q is less clean than the average line.

% of cars with 'light or no interior dirtiness' as defined by NYC Transit



### and performs below average on in-car announcements.

% of cars with correct announcements (as defined by NYC Transit)



**Suggestions? Complaints? Call the Q line superintendent at (347) 643-5457.**