

Straphangers Campaign

N SUBWAY LINE PROFILE



Straphangers Campaign MetroCard Rating **60¢**

The N line ranks worst out of the 21 subway lines rated by the Straphangers Campaign in 2005. Our ranking is based on the MTA New York City Transit data below, using a method described at www.straphangers.org.

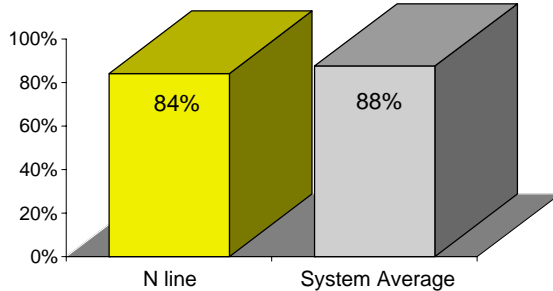
The N has less scheduled service than the average line. . .

scheduled minutes between weekday trains as of February 2004

	AM Rush	Noon	PM Rush	Overnight
N line	7:15	10	8:15	20
System Average	5:43	8:26	5:55	20

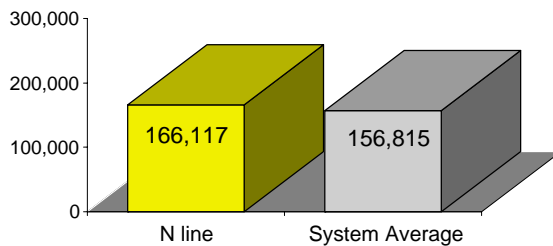
and arrives with below-average regularity.

% of trains arriving at regular intervals (without gaps in service or train "bunching") between 6 a.m. and 9 p.m.



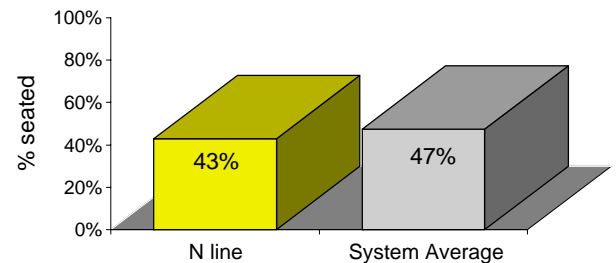
Cars on the N break down less often than the system average.

average miles traveled between delay caused by mechanical failures, 2004



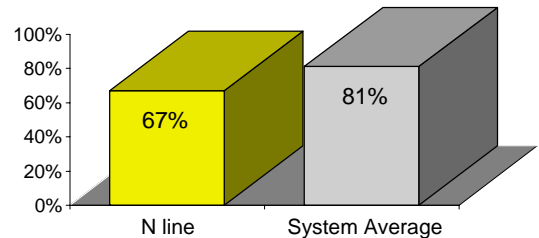
You have a below-average chance of getting a seat on the N.

% of passengers with seats at most crowded point during rush hour



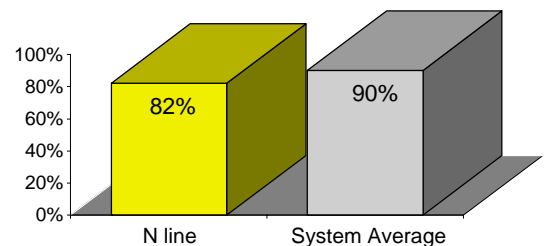
The N is tied for worst on cleanliness. . .

% of cars with 'light or no interior dirtiness' as defined by NYC Transit



and performs the poorest on in-car announcements.

% of cars with correct announcements (as defined by NYC Transit)



Suggestions? Complaints? Call the N line superintendent at (718) 521-7036.