

Straphangers Campaign

M SUBWAY LINE PROFILE



Straphangers Campaign MetroCard Rating 80¢

The M line ranks tied for 16 place out of the 21 subway line: rated by the Straphangers Campaign in 2005. Our ranking is based on the MTA New York City Transit data below, using a method described at www.straphangers.org.

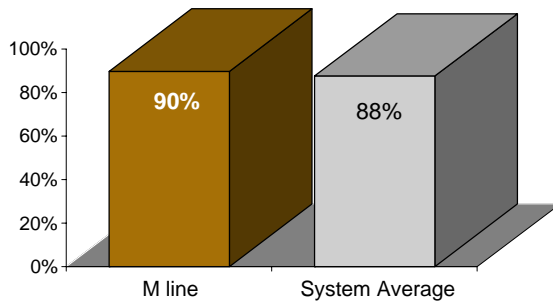
The M line has the least amount of daytime service. . .

scheduled minutes between weekday trains as of February 2004

	AM Rush	Noon	PM Rush	Overnight
M line	10	10	10	20
System Average	5:43	8:26	5:55	20

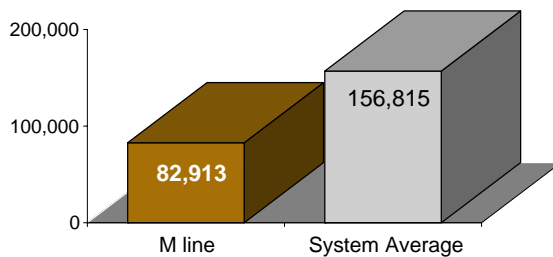
but arrives with regularity more often than the average line.

% of trains arriving at regular intervals (without gaps in service or train "bunching") between 6 a.m. and 9 p.m.



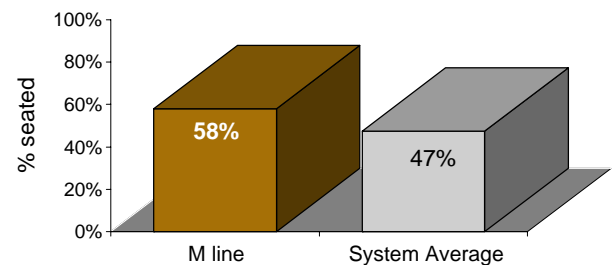
Cars on the M break down much more frequently than those on the average line.

average miles traveled between delay caused by mechanical failures, 2004



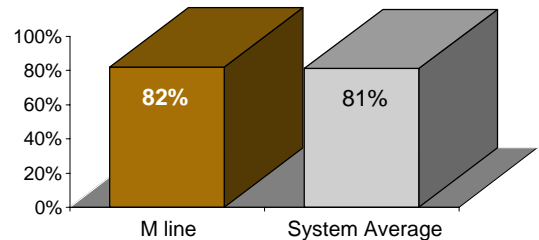
You have a better-than-average chance of getting a seat on the M.

% of passengers with seats at most crowded point during rush hour



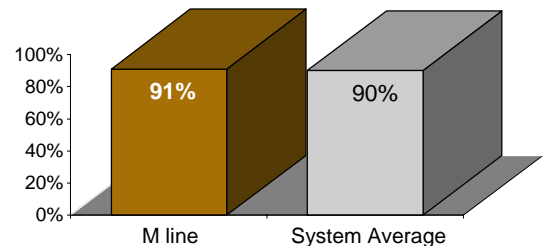
The M is cleaner than average. . .

% of cars with 'light or no interior dirtiness' as defined by NYC Transit



and also performs above average on in-car announcements.

% of cars with correct announcements (as defined by NYC Transit)



Suggestions? Complaints? Call the M line superintendent at (718) 927-7290.