

Straphangers Campaign

L SUBWAY LINE PROFILE



Straphangers Campaign MetroCard Rating \$1.00

The L line ranks tied for 7th place out of the 21 subway line: rated by the Straphangers Campaign in 2005. Our ranking is based on the MTA New York City Transit data below, using a method described at www.straphangers.org.

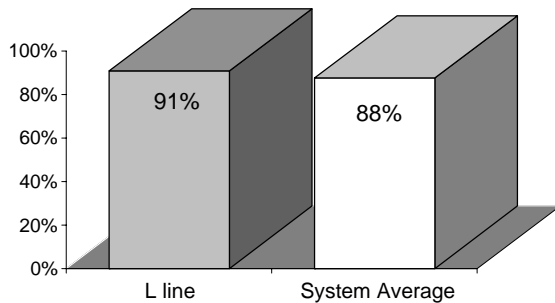
The L has more scheduled service than the average line. . .

scheduled minutes between weekday trains as of February 2004

	AM Rush	Noon	PM Rush	Overnight
L line	4	8	4	20
System Average	5:43	8:26	5:55	20

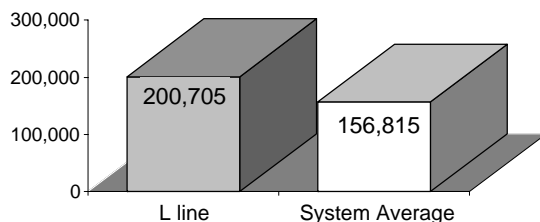
and arrives with regularity more often than the system average.

% of trains arriving at regular intervals (without gaps in service or train "bunching") between 6 a.m. and 9 p.m.



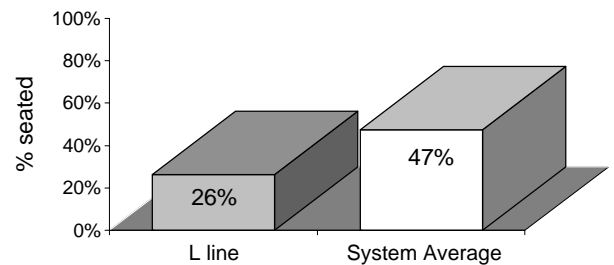
Cars on the L line break down less often than the system average.

average miles traveled between delay caused by mechanical failures, 2004



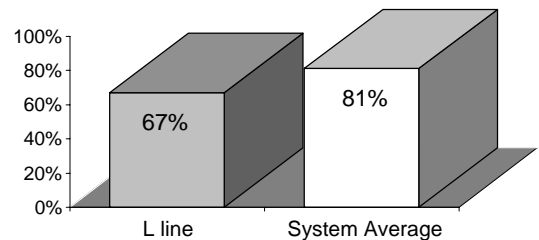
You have the least chance of getting a seat on the L.

% of passengers with seats at most crowded point during rush hour



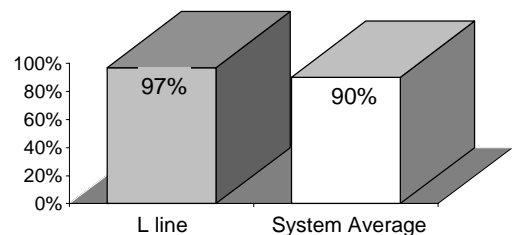
The L is tied for the dirtiest line. . .

% of cars with 'light or no interior dirtiness' as defined by NYC Transit



but performs above-average on in-car announcements.

% of cars with correct announcements (as defined by NYC Transit)



Suggestions? Complaints? Call the L line superintendent at (718) 566-3657.