

Straphangers Campaign

F SUBWAY LINE PROFILE



Straphangers Campaign MetroCard Rating **90¢**

The F line ranks 13th out of the 21 subway lines rated by the Straphangers Campaign in 2005. Our ranking is based on the MTA New York City Transit data below, using a method described at www.straphangers.org.

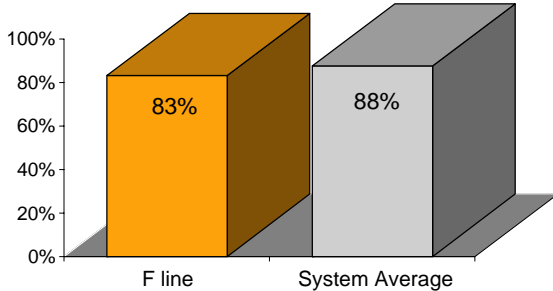
The F has more scheduled service than the average line. . .

scheduled minutes between weekday trains as of February 2004

	AM Rush	Noon	PM Rush	Overnight
F line	4	7:30	4:30	20
System Average	5:43	8:26	5:55	20

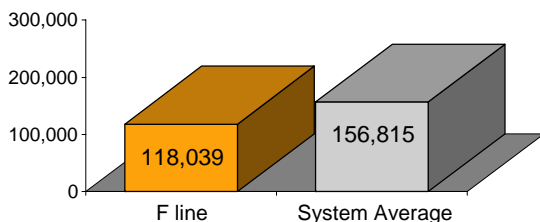
but arrives with below-average regularity.

% of trains arriving at regular intervals (without gaps in service or train "bunching") between 6 a.m. and 9 p.m.



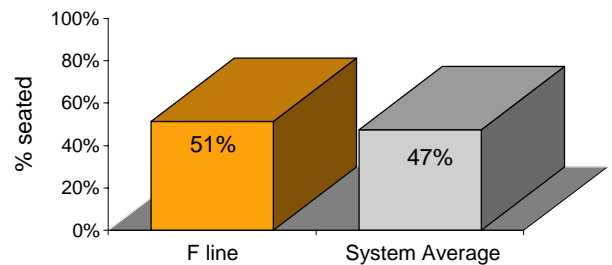
Cars on the F break down at a higher rate than the system average.

average miles traveled between delay caused by mechanical failures, 2004



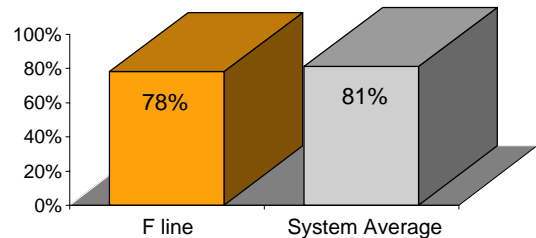
You have an above-average chance of getting a seat on the F.

% of passengers with seats at most crowded point during rush hour



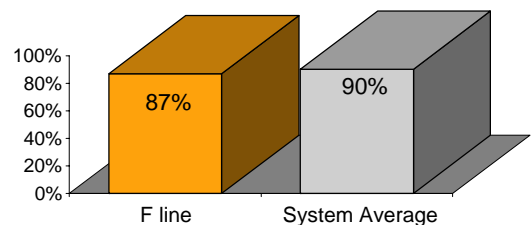
The F is less clean than the average line. . .

% of cars with 'light or no interior dirtiness' as defined by NYC Transit



and performs below average on in-car announcements.

% of cars with correct announcements (as defined by NYC Transit)



Suggestions? Complaints? Call the F line superintendent at (718) 243-3185.