

Straphangers Campaign

C SUBWAY LINE PROFILE



Straphangers Campaign MetroCard Rating 70¢

The C line ranks 20th out of the 21 subway lines rated by the Straphangers Campaign in 2005. Our ranking is based on the MTA New York City Transit data below, using a method described at www.straphangers.org.

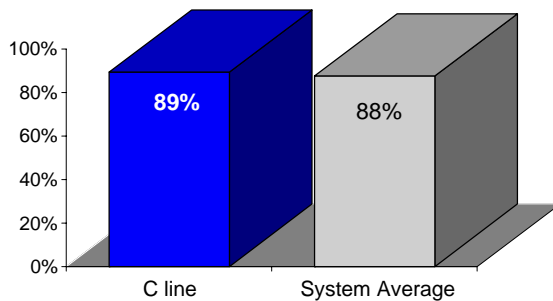
The C has less scheduled service than average, and doesn't run at night.

scheduled minutes between weekday trains as of February 2004

| | AM Rush | Noon | PM Rush | Overnight |
|-----------------------|-------------|-------------|-------------|-----------|
| C line | 9 | 10 | 9:45 | - |
| System Average | 5:43 | 8:26 | 5:55 | 20 |

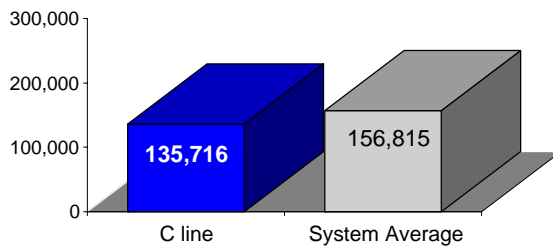
The C line arrives with above-average regularity. . .

% of trains arriving at regular intervals (without gaps in service or train "bunching") between 6 a.m. and 9 p.m.



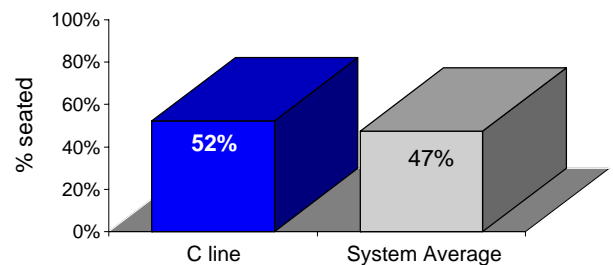
but its cars break down more often than the system average.

average miles traveled between delay caused by mechanical failures, 2004



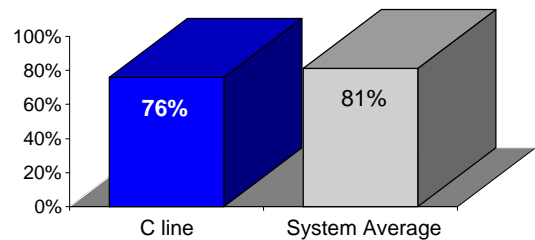
You're more likely to get a seat on the C.

% of passengers with seats at most crowded point during rush hour



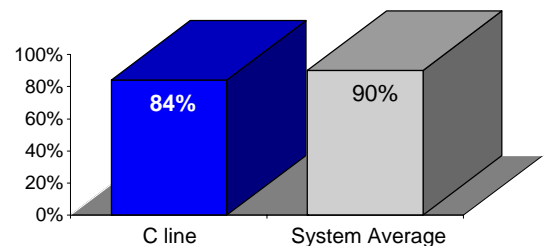
The C is less clean than the average line. .

% of cars with 'light or no interior dirtiness' as defined by NYC Transit



and performs below average on in-car announcements.

% of cars with correct announcements (as defined by NYC Transit)



Suggestions? Complaints? Call the C line superintendent at (718) 927-8784.