

Straphangers Campaign

B SUBWAY LINE PROFILE



Straphangers Campaign MetroCard Rating 75¢

The B line ranks tied for 18th place out of the 21 subway lines rated by the Straphangers Campaign in 2005. Our ranking is based on the MTA New York City Transit data below, using a method described at www.straphangers.org.

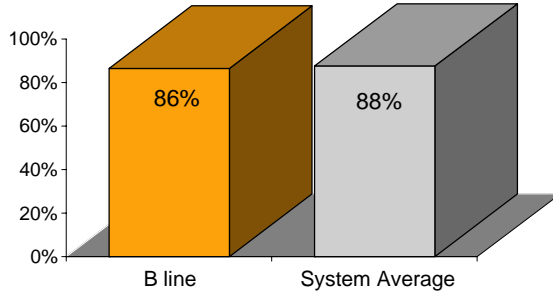
The B has less scheduled service than average, and doesn't run at night.

scheduled minutes between weekday trains as of February 2004

	AM Rush	Noon	PM Rush	Overnight
B line	8:15	10	8:15	-
System Average	5:43	8:26	5:55	20

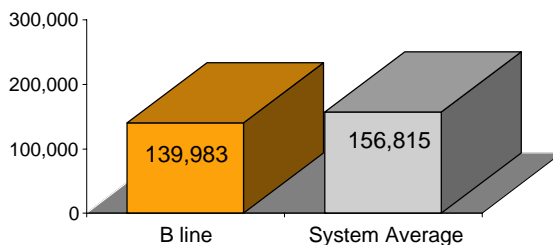
The B line arrives with below-average regularity. . .

% of trains arriving at regular intervals (without gaps in service or train "bunching") between 6 a.m. and 9 p.m.



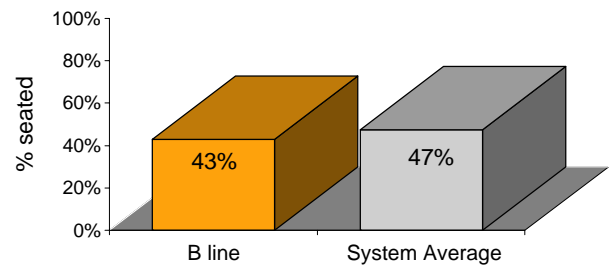
and its cars break down at a higher rate than the system average.

average miles traveled between delay caused by mechanical failures, 2004



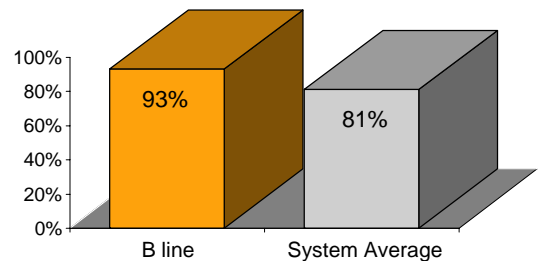
You have a below-average chance of getting a seat on the B.

% of passengers with seats at most crowded point during rush hour



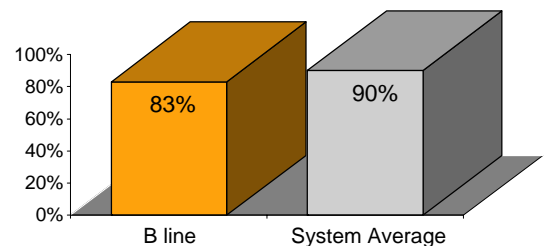
The B is cleaner than the average line. . .

% of cars with 'light or no interior dirtiness' as defined by NYC Transit



but performs below average on in-car announcements.

% of cars with correct announcements (as defined by NYC Transit)



Suggestions? Complaints? Call the B line superintendent at (212) 424-4515.