

# Straphangers Campaign

## 3 SUBWAY LINE PROFILE



**Straphangers Campaign MetroCard Rating 95¢**

The 3 line ranks tied for 10th place out of the 21 subway lines rated by the Straphangers Campaign in 2005. Our ranking is based on the MTA New York City Transit data below, using a method described at [www.straphangers.org](http://www.straphangers.org).

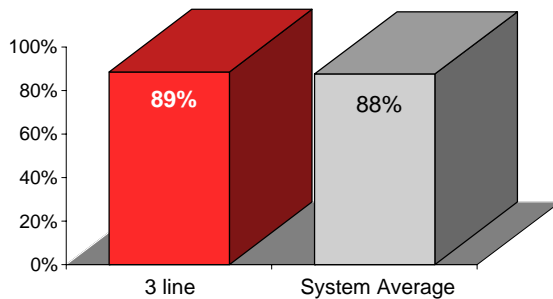
### The 3 line has an average amount of rush-hour service but doesn't run at night.

scheduled minutes between weekday trains as of February 2004

	AM Rush	Noon	PM Rush	Overnight
<b>3 line</b>	<b>5:45</b>	<b>8</b>	<b>5:45</b>	<b>-</b>
<b>System Average</b>	<b>5:43</b>	<b>8:26</b>	<b>5:55</b>	<b>20</b>

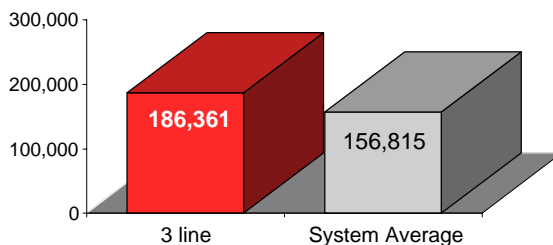
### The 3 arrives with regularity more often than the average line. . .

% of trains arriving at regular intervals (without gaps in service or train "bunching") between 6 a.m. and 9 p.m.



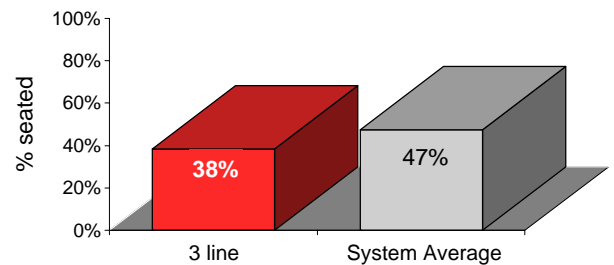
### and cars on the 3 break down less often than the average line.

average miles traveled between delay caused by mechanical failures, 2004



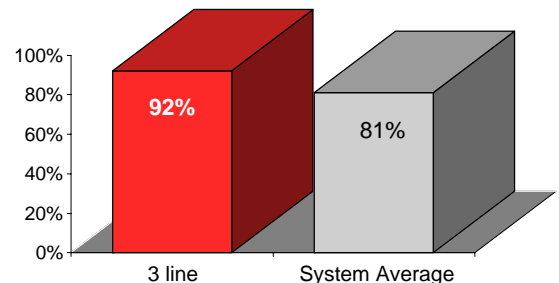
### You're less likely to get a seat on the 3 line.

% of passengers with seats at most crowded point during rush hour



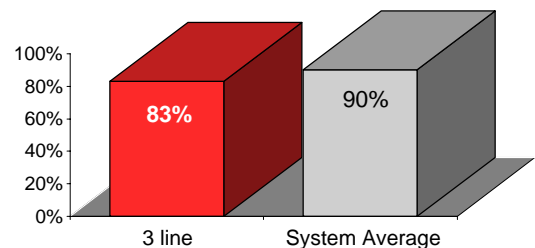
### The 3 is cleaner than the average line. . .

% of cars with 'light or no interior dirtiness' as defined by NYC Transit



### but performs below average on in-car announcements.

% of cars with correct announcements (as defined by NYC Transit)



**Suggestions? Complaints? Call the 3 line superintendent at (718) 566-5806.**