

Straphangers Campaign

1/9 SUBWAY LINE PROFILE

The 1 & 9 lines (which changed to just the 1 line in 2005) rank 2nd out of the 21 subway lines rated by the Straphangers Campaign. Our ranking is based on the MTA New York City Transit data below, using a method described at www.straphangers.org.



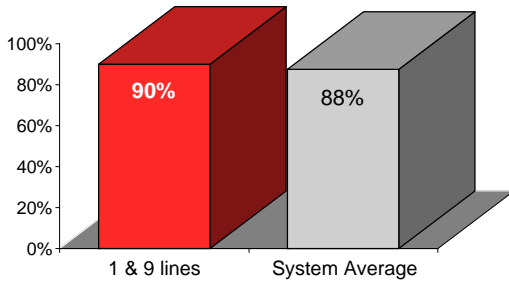
The 1 & 9 lines are scheduled to come much more often than most subway lines. . .

scheduled minutes between weekday trains as of February 2004

| | AM Rush | Noon | PM Rush | Overnight |
|-----------------------|-------------|-------------|-------------|-----------|
| 1 & 9 line | 3 | 5 | 3:30 | 20 |
| System Average | 5:43 | 8:26 | 5:55 | 20 |

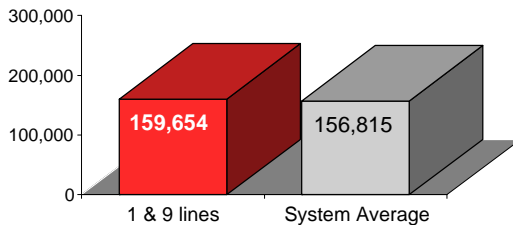
and arrive with above-average regularity.

% of trains arriving at regular intervals (without gaps in service or train "bunching") between 6 a.m. and 9 p.m.



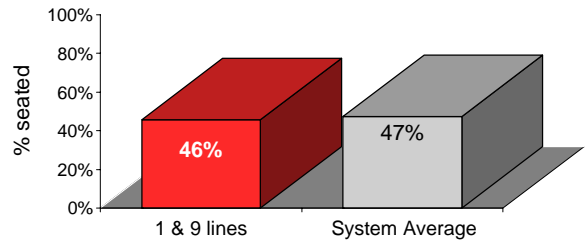
Cars on the 1 & 9 break down less often than the average line.

average miles traveled between delay: caused by mechanical failures, 2004



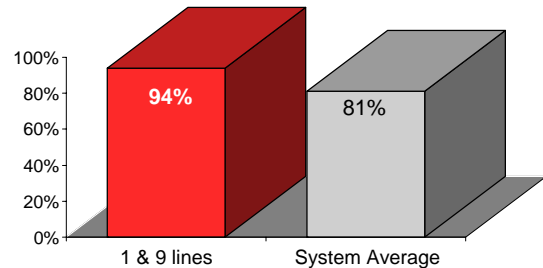
You're less likely to get a seat on the 1 & 9.

% of passengers with seats at most crowded point during rush hour



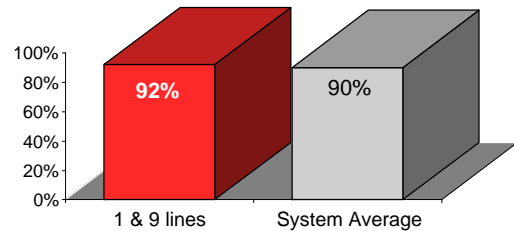
The 1 & 9 lines are tied for the cleanest line. .

% of cars with 'light or no interior dirtiness' as defined by NYC Transit



and are above average on in-car announcements.

% of cars with correct announcements (as defined by NYC Transit)



Suggestions? Complaints? Call the 1 & 9 lines superintendent at (212) 704-0537.