

Straphangers Campaign

R SUBWAY LINE PROFILE



Straphangers Campaign
MetroCard Rating **90¢**

The R line ranks 18th out of the 21 subway lines rated by the Straphangers Campaign in 2004. Our ranking is based on the MTA New York City Transit data below, using a method described at www.straphangers.org.

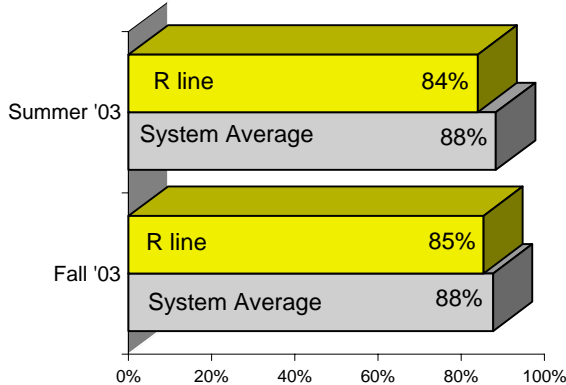
The R line is scheduled to come less often than most lines. . .

scheduled minutes between weekday trains
as of February 2004

	AM Rush	Noon	PM Rush	Overnight
R line	7	10	7	20
System Average	5:35	8:25	5:55	20

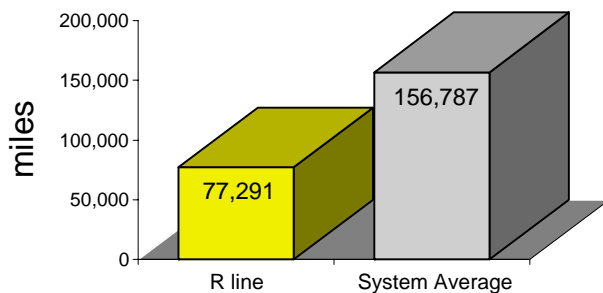
and it arrives with below-average regularity.

% of trains arriving at regular intervals
(without gaps in service or train "bunching")
between 6 a.m. and 9 p.m.



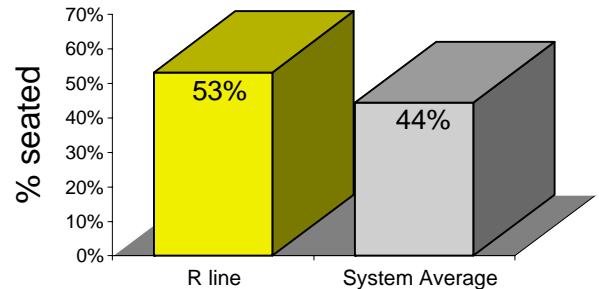
The R breaks down more often than the average line.

average miles traveled between delays
caused by mechanical failures, 2003



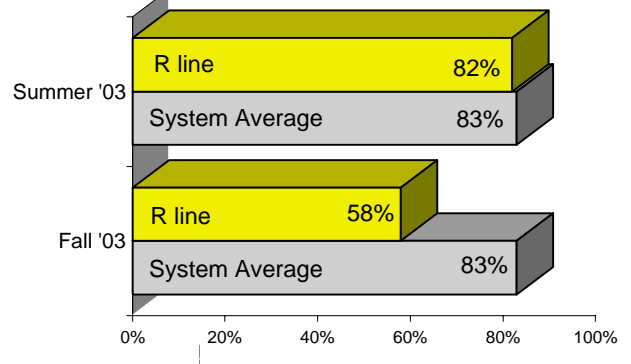
You're more likely to get a seat on the R.

% of passengers with seats
at most crowded point during rush hour



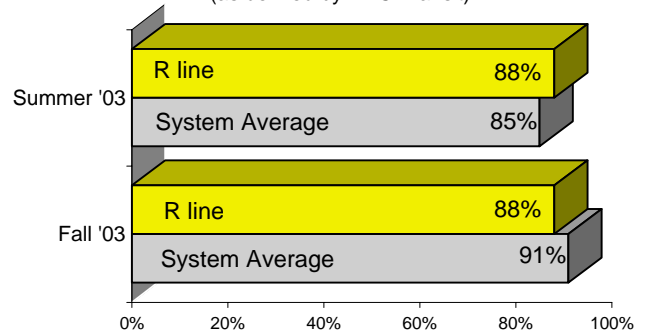
The R is the least clean in the system. . .

% of cars with "light or no interior dirtiness"
(as defined by NYC Transit)



and rates both above and below average on in-car announcements.

% of trains with correct announcements
(as defined by NYC Transit)



Suggestions? Complaints? Call the R line superintendent at (718) 334-8190.