

# Straphangers Campaign

## G SUBWAY LINE PROFILE



**Straphangers Campaign MetroCard Rating** **No Rating**

The G line profile is based on the MTA New York City Transit information below. (There is no MetroCard rating for the G. Its data on crowding cannot be compared to other lines.) Full methodology is available at [www.straphangers.org](http://www.straphangers.org).

### The G line is scheduled to come less often than most lines. . .

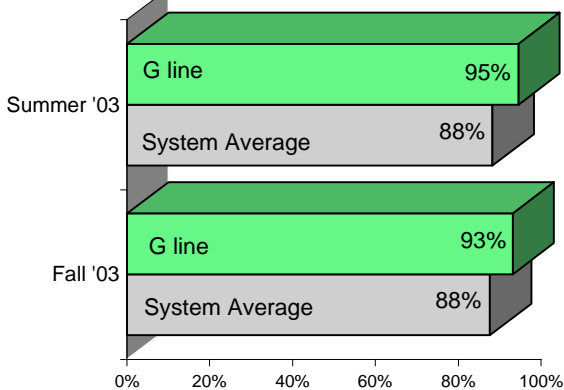
scheduled minutes between weekday trains  
as of February 2004

	AM Rush	Noon	PM Rush	Overnight
<b>G line</b>	<b>8</b>	<b>10</b>	<b>8</b>	<b>20</b>
<b>System Average</b>	<b>5:35</b>	<b>8:25</b>	<b>5:55</b>	<b>20</b>

*Reliable crowding data for the G line is unavailable.*

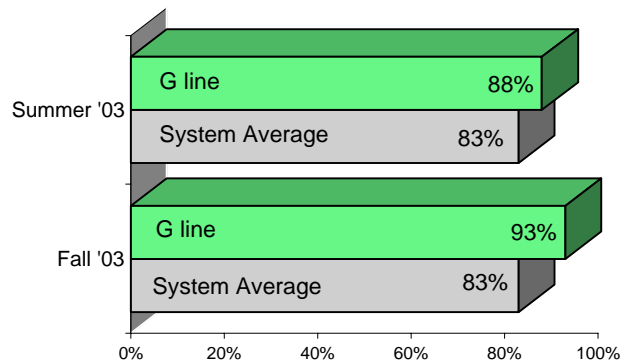
### but arrives with regularity the most often of all lines.

% of trains arriving at regular intervals  
(without gaps in service or train "bunching")  
between 6 a.m. and 9 p.m.



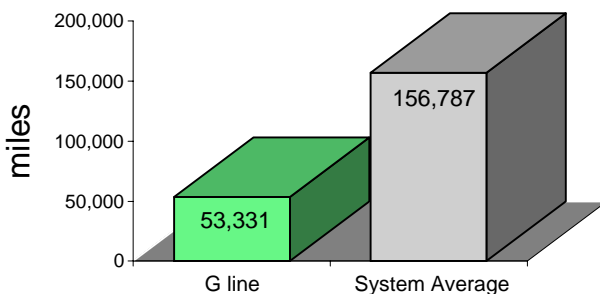
### On cleanliness, the G performs above the average line. . .

% of cars with "light or no interior dirtiness"  
(as defined by NYC Transit)



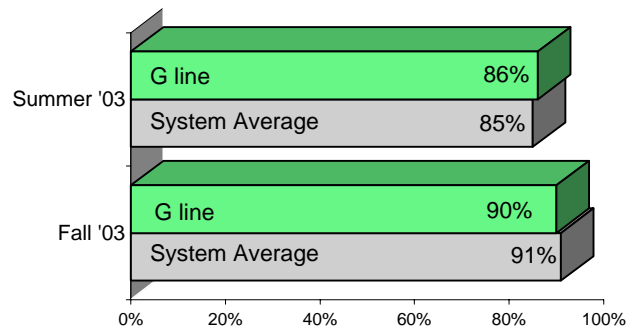
### The G has the highest breakdown rate of all lines in this report.

average miles traveled between delays  
caused by mechanical failures, 2003



### but is inconsistent on in-car announcements.

% of trains with correct announcements  
(as defined by NYC Transit)



**Suggestions? Complaints? Call the G line superintendent at (718) 334-8190.**