

Straphangers Campaign

F SUBWAY LINE PROFILE



Straphangers Campaign
MetroCard Rating **\$1.10**

The F line ranks 12th out of the 21 subway lines rated by the Straphangers Campaign in 2004. Our ranking is based on the MTA New York City Transit data below, using a method described at www.straphangers.org.

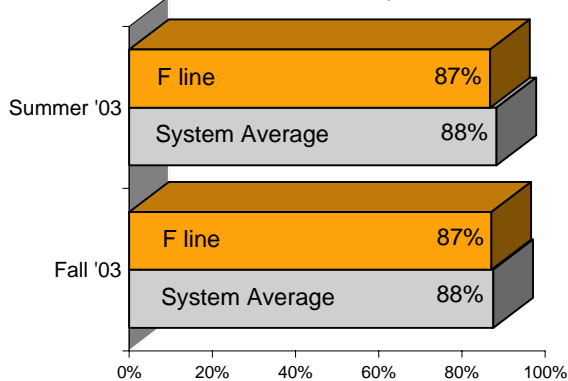
The F line is scheduled to come more often than most subway lines. . .

scheduled minutes between weekday trains
as of February 2004

	AM Rush	Noon	PM Rush	Overnight
F line	4	7:30	4	20
System Average	5:35	8:25	5:55	20

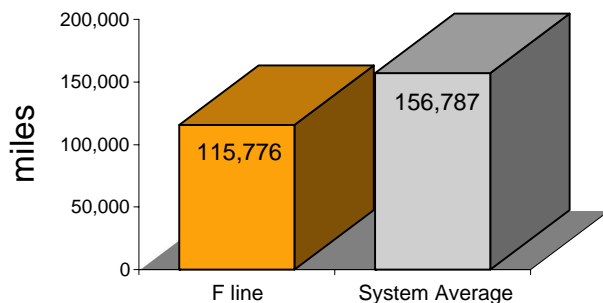
but arrives with regularity slightly less often than the average line.

% of trains arriving at regular intervals
(without gaps in service or train "bunching")
between 6 a.m. and 9 p.m.



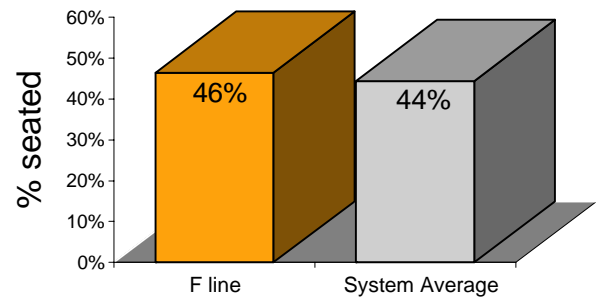
The F breaks down more often than the system average.

average miles traveled between delays
caused by mechanical failures, 2003



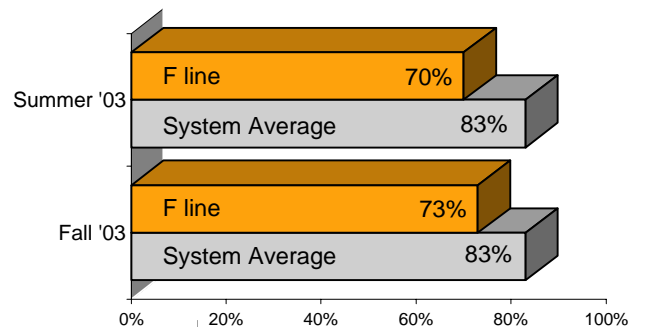
You have a better-than-average chance of getting a seat on the F.

% of passengers with seats
at most crowded point during rush hour



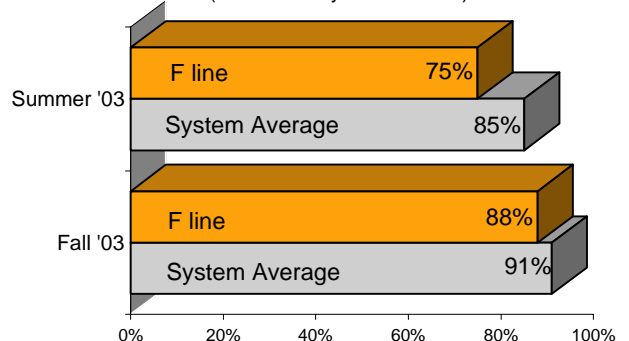
On cleanliness, the F is below average. .

% of cars with "light or no interior dirtiness"
(as defined by NYC Transit)



and also on in-car announcements.

% of trains with correct announcements
(as defined by NYC Transit)



Suggestions? Complaints? Call the F line superintendent at (718) 243-3185.