

# Straphangers Campaign

## E SUBWAY LINE PROFILE



The E line ranks 4th out of the 21 subway lines rated by the Straphangers Campaign in 2004. Our ranking is based on the MTA New York City Transit data below, using a method described at [www.straphangers.org](http://www.straphangers.org).

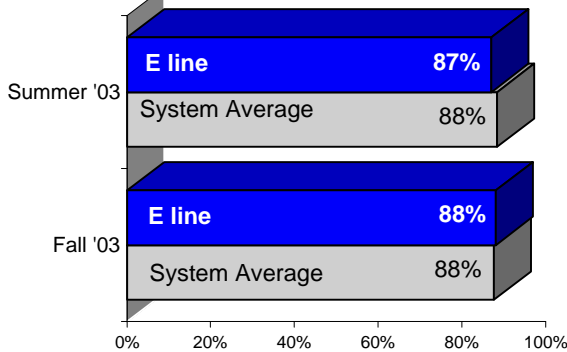
### The E line is scheduled to come more often than most lines. . .

scheduled minutes between weekday trains  
as of February 2004

	AM Rush	Noon	PM Rush	Overnight
<b>E line</b>	<b>4</b>	<b>7:30</b>	<b>4</b>	<b>20</b>
<b>System Average</b>	<b>5:35</b>	<b>8:25</b>	<b>5:55</b>	<b>20</b>

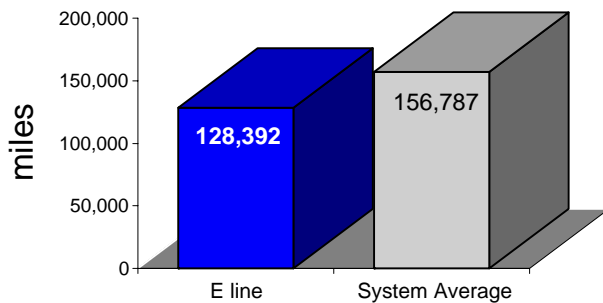
### and arrives with nearly-average regularity.

% of trains arriving at regular intervals  
(without gaps in service or train "bunching")  
between 6 a.m. and 9 p.m.



### Cars on the E break down more often than those on the average line.

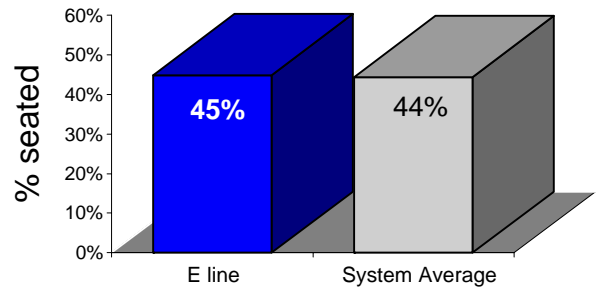
average miles traveled between delays  
caused by mechanical failures, 2003



**Straphangers Campaign MetroCard Rating \$1.30**

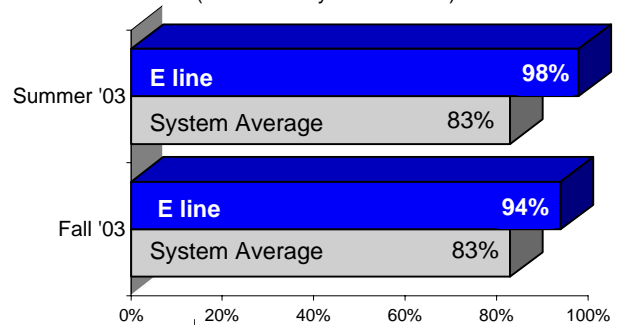
### You're more likely to get a seat on the E.

% of passengers with seats  
at most crowded point during rush hour



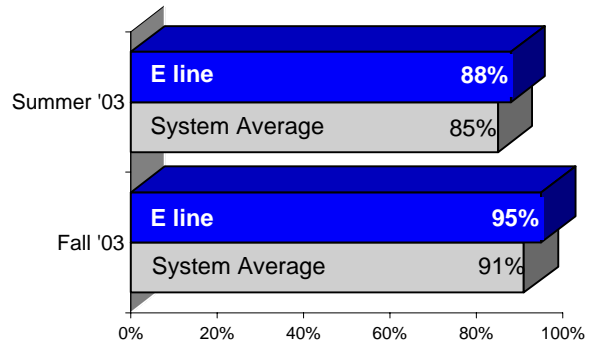
### The E is cleaner than all other lines. . .

% of cars with "light or no interior dirtiness"  
(as defined by NYC Transit)



### and also performs above average on in-car announcements.

% of trains with correct announcements  
(as defined by NYC Transit)



**Suggestions? Complaints? Call the E line superintendent at (718) 334-7692.**