

# Straphangers Campaign

## D SUBWAY LINE PROFILE



Straphangers Campaign  
MetroCard Rating **\$1.50**

The D\* line ranks 3rd out of the 21 subway lines rated by the Straphangers Campaign in 2004. Our ranking is based on the MTA New York City Transit data below, using a method described at [www.straphangers.org](http://www.straphangers.org).

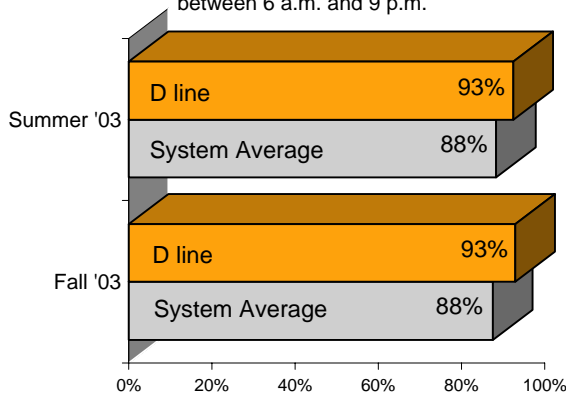
### The D line is scheduled to come slightly less often than the average line. . .

scheduled minutes between weekday trains  
as of February 2004

|                       | AM Rush     | Noon        | PM Rush     | Overnight |
|-----------------------|-------------|-------------|-------------|-----------|
| <b>D line</b>         | <b>6</b>    | <b>10</b>   | <b>7</b>    | <b>20</b> |
| <b>System Average</b> | <b>5:35</b> | <b>8:25</b> | <b>5:55</b> | <b>20</b> |

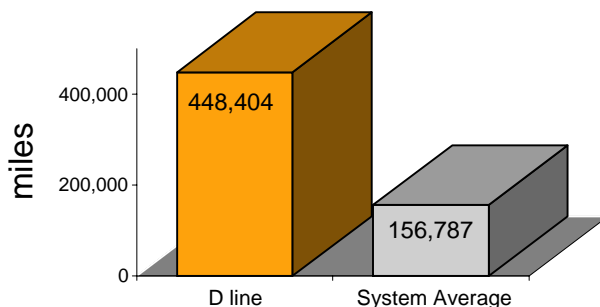
### but arrives with regularity more often than the average line.

% of trains arriving at regular intervals  
(without gaps in service or train "bunching")  
between 6 a.m. and 9 p.m.



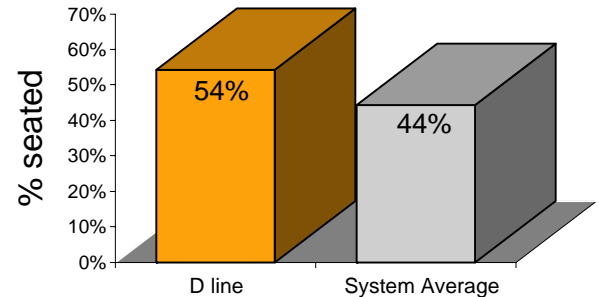
### Cars on the D break down less often than any other line.

average miles traveled between delays  
caused by mechanical failures, 2003



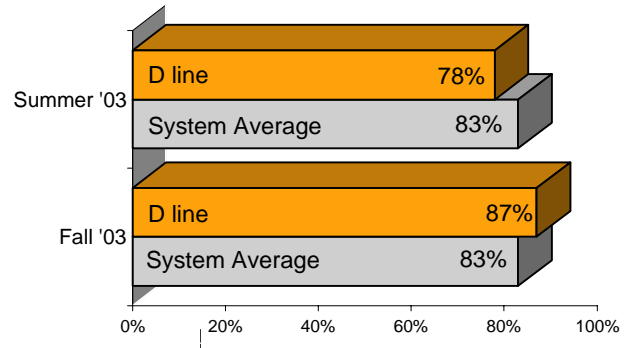
### You're more likely to get a seat on the D than on any other line.

% of passengers with seats  
at most crowded point during rush hour



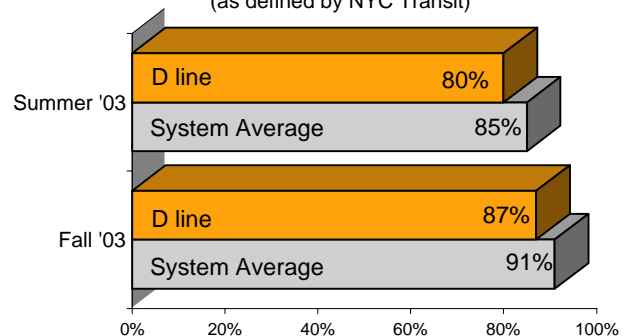
### On cleanliness, the D is inconsistent. . .

% of cars with "light or no interior dirtiness"  
(as defined by NYC Transit)



### but performs above average on in-car announcements.

% of trains with correct announcements  
(as defined by NYC Transit)



\*This line was affected by the restoration of all four tracks on the Manhattan Bridge in February 2004. Its routing is now different from the last half of 2003, the period covered by much of the data in this profile.

**Suggestions? Complaints? Call the D line superintendent at (718) 430-8294.**