

Straphangers Campaign

5 SUBWAY LINE PROFILE



Straphangers Campaign MetroCard Rating \$1.05

The 5 line ranks 15th out of the 21 subway lines rated by the Straphangers Campaign in 2004. Our ranking is based on the MTA New York City Transit data below, using a method described at www.straphangers.org.

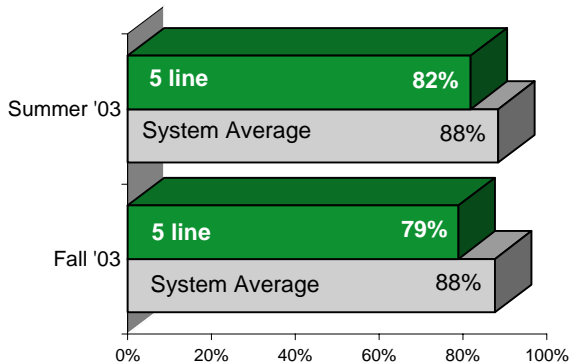
The 5 line is scheduled to come more often than most lines. . .

scheduled minutes between weekday trains as of February 2004

	AM Rush	Noon	PM Rush	Overnight
5 line	4:30	10	4	20
System Average	5:35	8:25	5:55	20

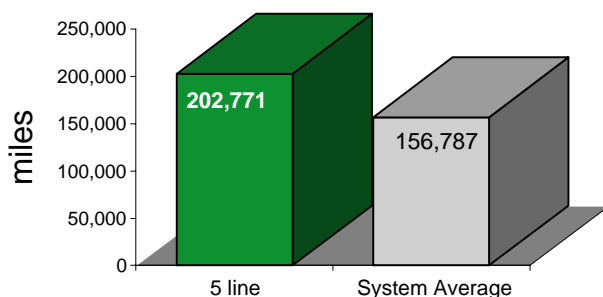
but arrives with the lowest regularity of any line in the system.

% of trains arriving at regular intervals (without gaps in service or train "bunching") between 6 a.m. and 9 p.m.



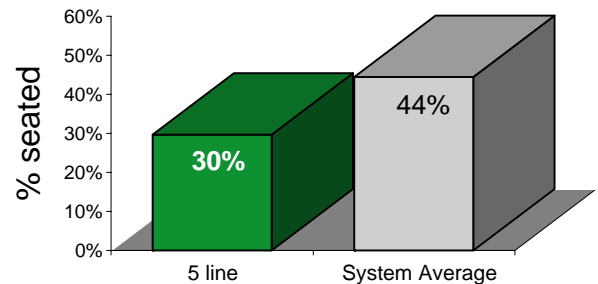
The 5 breaks down less often than the average line.

average miles traveled between delays caused by mechanical failures, 2003



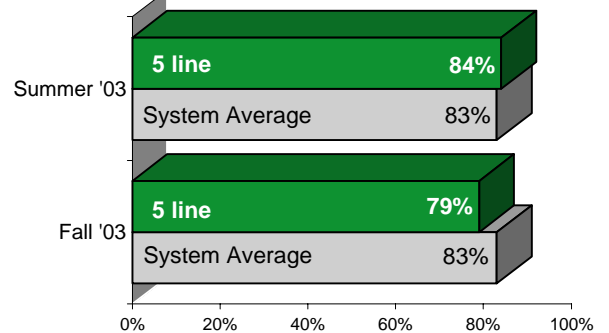
You're less likely to get a seat on the 5.

% of passengers with seats at most crowded point during rush hour



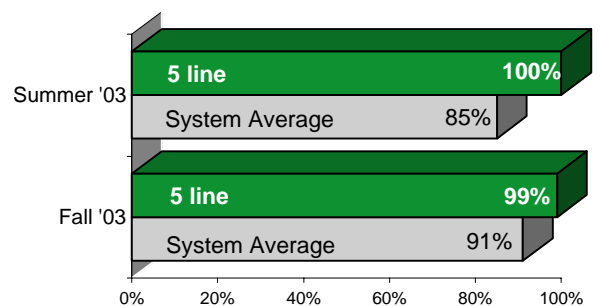
On cleanliness, the 5 is inconsistent. . .

% of cars with "light or no interior dirtiness" (as defined by NYC Transit)



but performs better than all other lines on in-car announcements.

% of trains with correct announcements (as defined by NYC Transit)



Suggestions? Complaints? Call the 5 line superintendent at (718) 430-8229.