

# Straphangers Campaign

## 2 SUBWAY LINE PROFILE

The 2 line ranks 8th out of the 21 subway lines rated by the Straphangers Campaign in 2004. Our ranking is based on the MTA New York City Transit data below, using a method described at [www.straphangers.org](http://www.straphangers.org).



**Straphangers Campaign MetroCard Rating \$1.20**

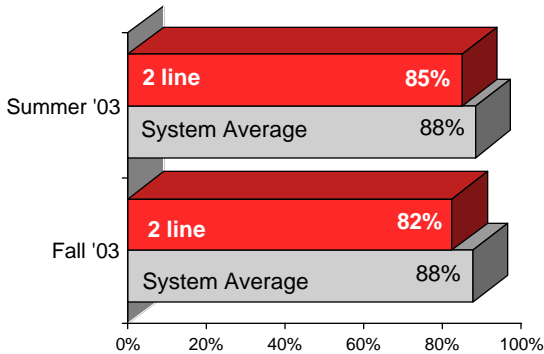
### The 2 line is scheduled to come more often than most subway lines. . .

scheduled minutes between weekday trains as of February 2004

|                       | AM Rush     | Noon        | PM Rush     | Overnight |
|-----------------------|-------------|-------------|-------------|-----------|
| <b>2 line</b>         | <b>5</b>    | <b>8</b>    | <b>6</b>    | <b>20</b> |
| <b>System Average</b> | <b>5:35</b> | <b>8:25</b> | <b>5:55</b> | <b>20</b> |

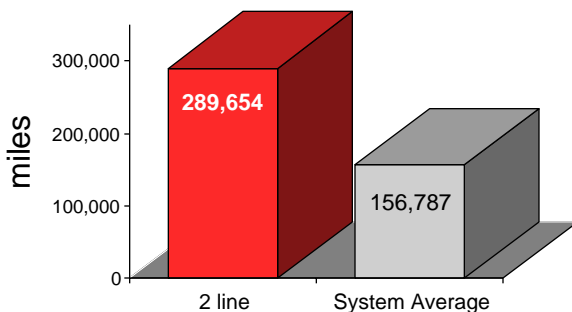
### but arrives with below-average regularity.

% of trains arriving at regular intervals (without gaps in service or train "bunching") between 6 a.m. and 9 p.m.



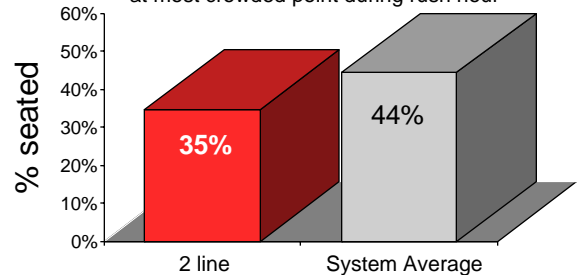
### Cars on the 2 break down less often than those on the average line.

average miles traveled between delays caused by mechanical failures, 2003



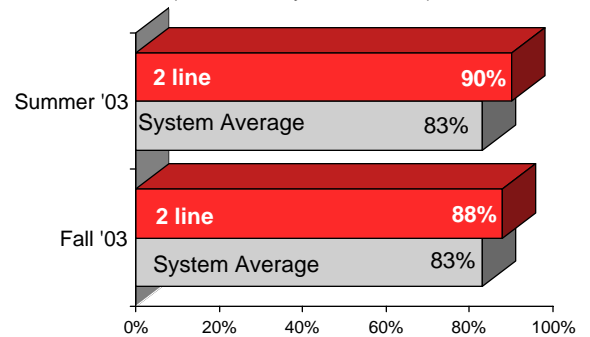
### You're less likely to get a seat on the 2.

% of passengers with seats at most crowded point during rush hour



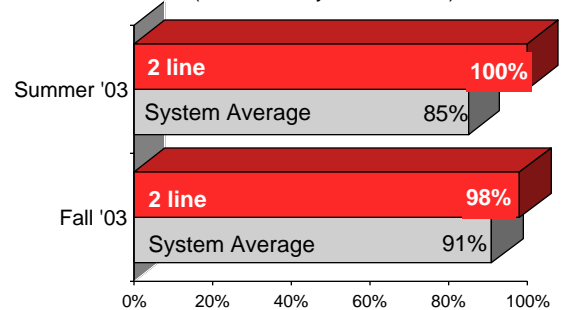
### The 2 is cleaner than average. . .

% of cars with "light or no interior dirtiness" (as defined by NYC Transit)



### and performs above average on in-car announcements.

% of trains with correct announcements (as defined by NYC Transit)



**Suggestions? Complaints? Call the 2 line superintendent at (718) 430-5120.**