

# Straphangers Campaign

## W SUBWAY LINE PROFILE



Straphangers Campaign  
MetroCard Rating

90¢

The W line ranks 15th of the 20 subway lines rated by the Straphangers Campaign. Our ranking is based on the MTA New York City Transit data below, using a method described at [www.straphangers.org](http://www.straphangers.org).

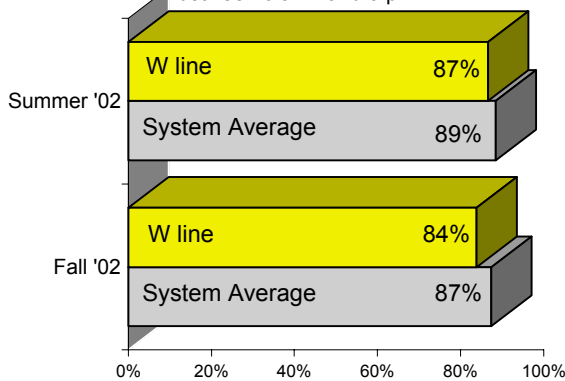
**The W line is largely scheduled to come less often than the average line. . .**

scheduled minutes between weekday trains  
as of December 2002

	AM Rush	Noon	PM Rush	Overnight
<b>W line</b>	<b>7:15</b>	<b>10</b>	<b>6:15</b>	<b>20</b>
<b>System Average</b>	<b>6:02</b>	<b>8:52</b>	<b>6:23</b>	<b>20</b>

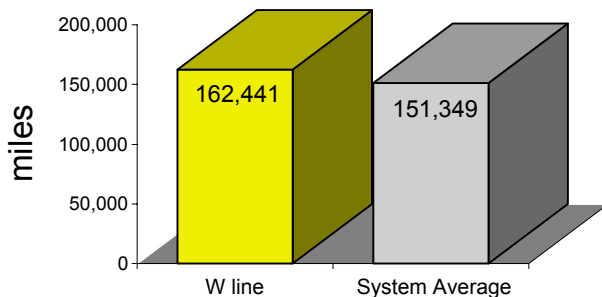
**and arrives with lower-than-average regularity.**

% of trains arriving at regular intervals  
(without gaps in service or train "bunching")  
between 6 a.m. and 9 p.m.



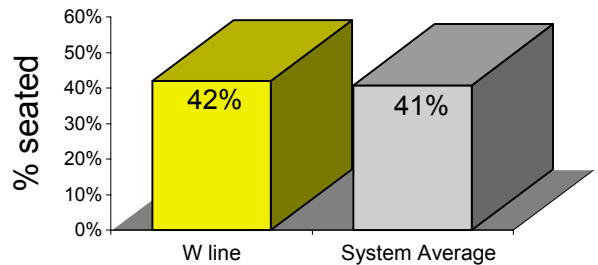
**Cars on the W break down less often than the average line.**

average miles traveled between delays caused by  
mechanical failures, July to December 2002



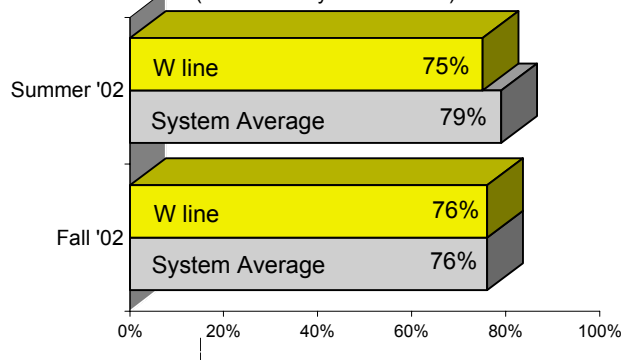
**You're more likely to get a seat on the W.**

% of passengers with seats  
at most crowded point during rush hour



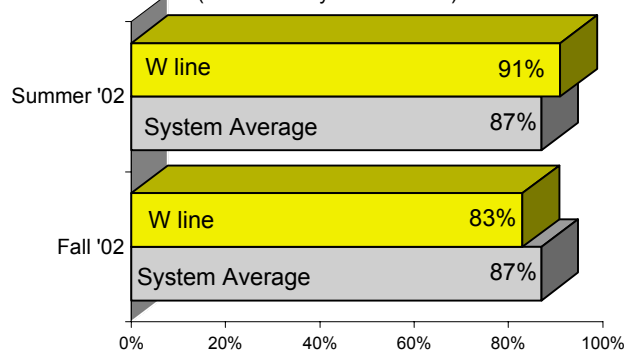
**On cleanliness, the W performs at or above the system average. . .**

% of cars with "light or no interior dirtiness"  
(as defined by NYC Transit)



**and also on in-car announcements.**

% of trains with correct announcements  
(as defined by NYC Transit)



**Suggestions? Complaints? Call the W line superintendent at (718) 714-3981.**