

Straphangers Campaign

R SUBWAY LINE PROFILE



**Straphangers Campaign
MetroCard Rating**

85¢

The R line ranks 16th out of the 20 subway lines rated by the Straphangers Campaign. Our ranking is based on the MTA New York City Transit data below, using a method described at www.straphangers.org.

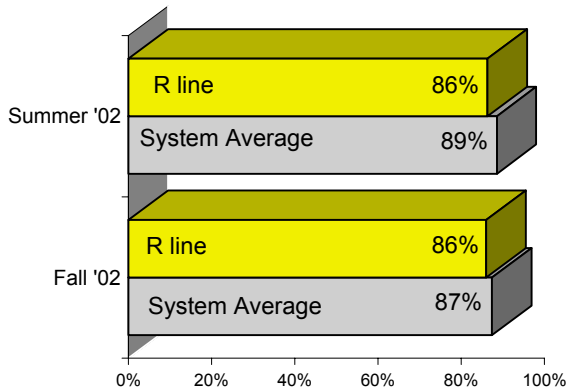
The R line is scheduled to come less often than most lines. . .

scheduled minutes between weekday trains
as of December 2002

	AM Rush	Noon	PM Rush	Overnight
R line	7	10	6:45	20
System Average	6:02	8:52	6:23	20

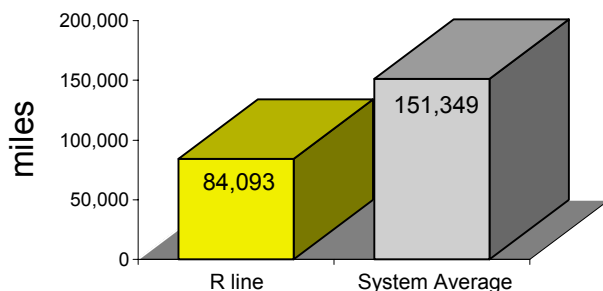
and it arrives with below-average regularity.

% of trains arriving at regular intervals
(without gaps in service or train "bunching")
between 6 a.m. and 9 p.m.



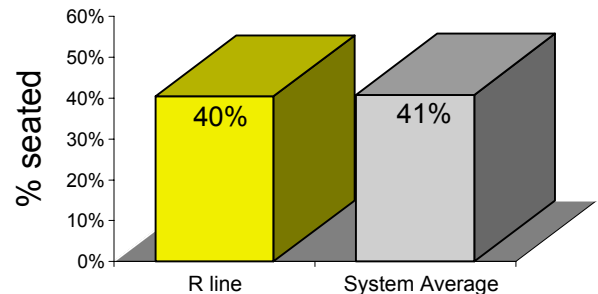
The R breaks down much more often than the average line.

average miles traveled between delays caused by
mechanical failures, July to December 2002



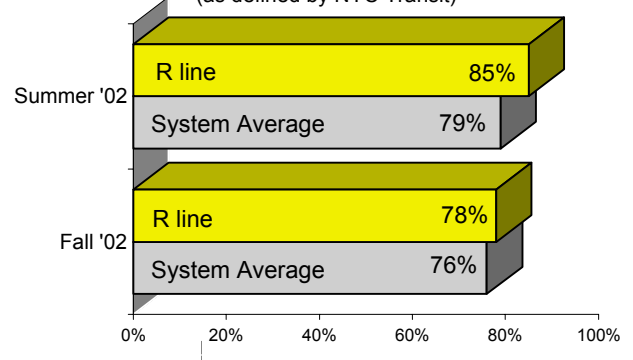
You're less likely to get a seat on the R.

% of passengers with seats
at most crowded point during rush hour



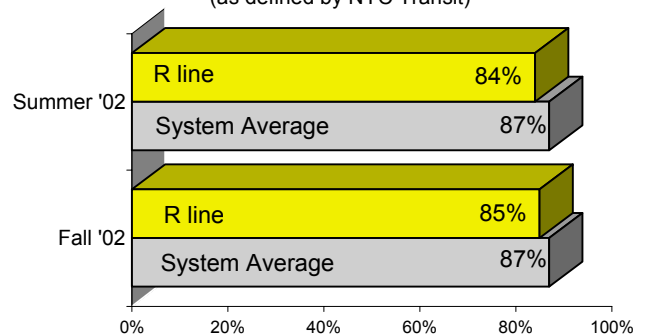
On cleanliness, the R performs above average. . .

% of cars with "light or no interior dirtiness"
(as defined by NYC Transit)



but rates below average on in-car announcements.

% of trains with correct announcements
(as defined by NYC Transit)



Suggestions? Complaints? Call the R line superintendent at (718) 334-8190.