

# Straphangers Campaign

## Q SUBWAY LINE PROFILE



The Q line ranks 11th out of the 20 subway lines rated by the Straphangers Campaign. Our ranking is based on the MTA New York City Transit data below, using a method described at [www.straphangers.org](http://www.straphangers.org)

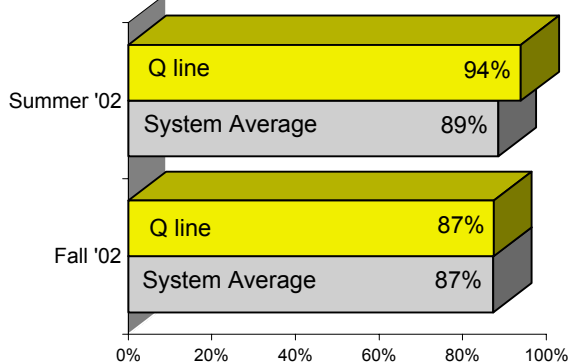
### The Q line is scheduled to arrive less often than the average line.

scheduled minutes between weekday trains  
as of December 2002

	AM Rush	Noon	PM Rush	Overnight
<b>Q line</b>	<b>6:30</b>	<b>10</b>	<b>6:30</b>	<b>20</b>
<b>System Average</b>	<b>6:02</b>	<b>8:52</b>	<b>6:23</b>	<b>20</b>

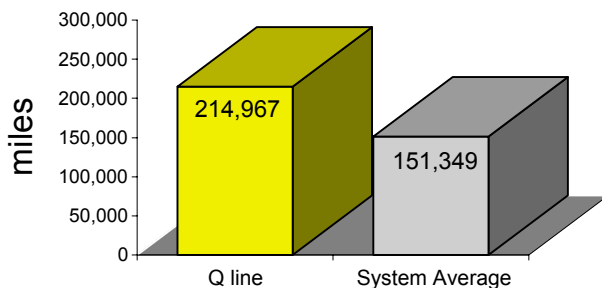
### The Q arrives with average-or-better regularity. . .

% of trains arriving at regular intervals  
(without gaps in service or train "bunching")  
between 6 a.m. and 9 p.m.



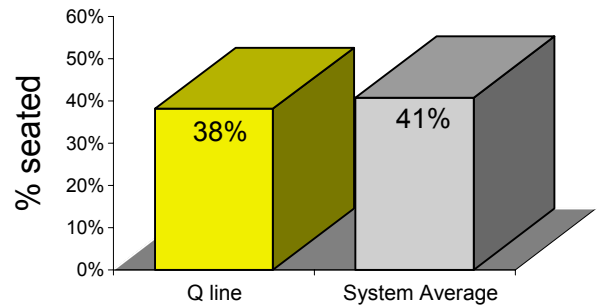
### and breaks down less often than most other lines.

average miles traveled between delays caused by  
mechanical failures, July to December 2002



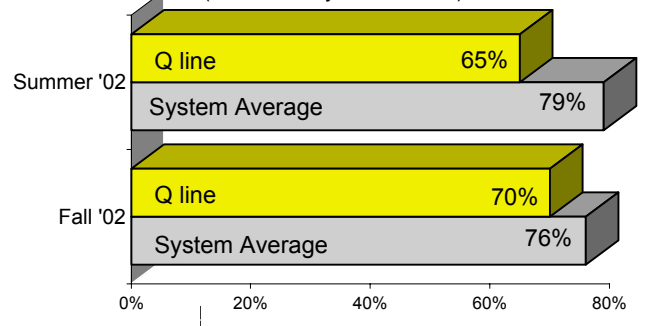
### You're less likely to get a seat on the Q.

% of passengers with seats  
at most crowded point during rush hour



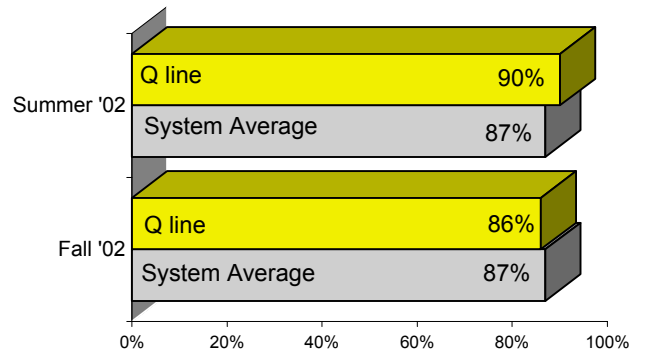
### The Q is less clean than the average line. . .

% of cars with "light or no interior dirtiness"  
(as defined by NYC Transit)



### and performs both above and below average on in-car announcements.

% of trains with correct announcements  
(as defined by NYC Transit)



**Suggestions? Complaints? Call the Q line superintendent at (212) 714-7719.**