

Straphangers Campaign

M SUBWAY LINE PROFILE



Straphangers Campaign MetroCard Rating 85¢

The M line ranks 17th out of the 20 subway lines rated by the Straphangers Campaign. Our ranking is based on the MTA New York City Transit data below, using a method described at www.straphangers.org.

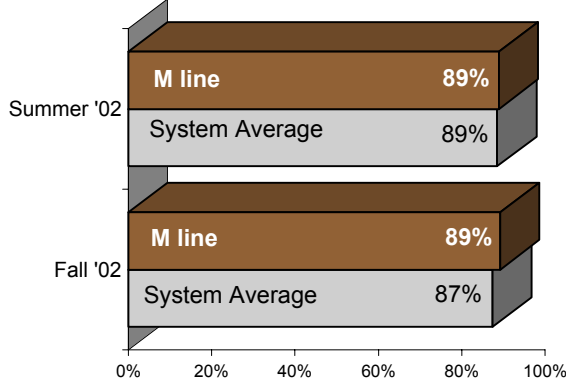
The M line is tied for least on amount of daytime service. . .

scheduled minutes between weekday trains
as of December 2002

	AM Rush	Noon	PM Rush	Overnight
M line	9	10	10	20
System Average	6:02	8:52	6:23	20

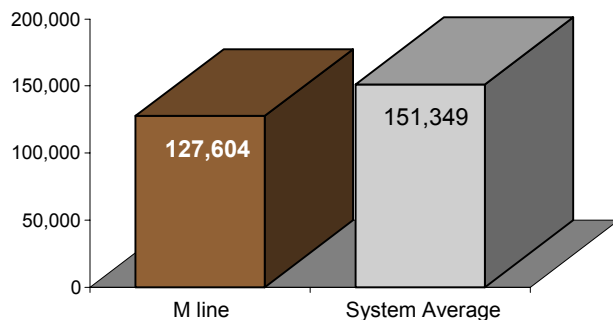
but arrives with regularity at or above the system average.

% of trains arriving at regular intervals
(without gaps in service or train "bunching")
between 6 a.m. and 9 p.m.



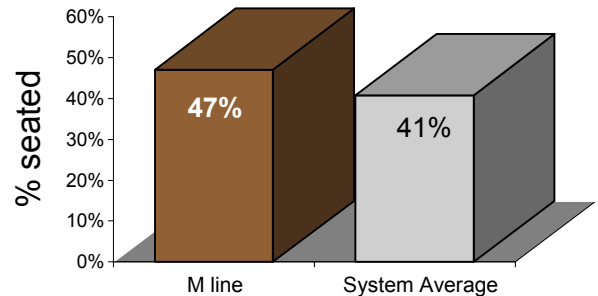
Cars on the M break down at a rate higher than the system average.

average miles traveled between delays caused by
mechanical failures, July to December 2002



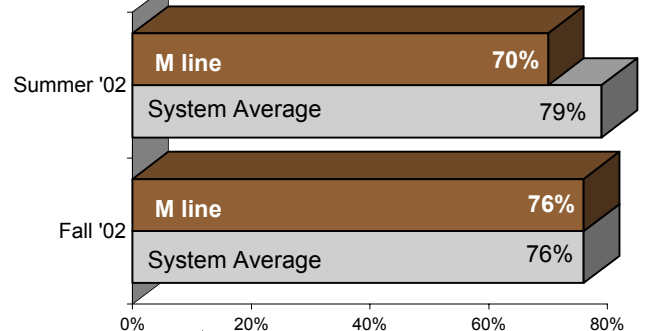
You're more likely to get a seat on the M.

% of passengers with seats
at most crowded point during rush hour



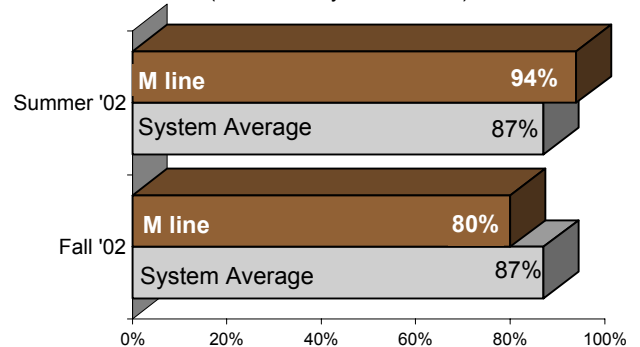
On cleanliness, the M performs at or below the system average. . .

% of cars with "light or no interior dirtiness"
(as defined by NYC Transit)



but is inconsistent on announcements.

% of trains with correct announcements
(as defined by NYC Transit)



Suggestions? Complaints? Call the M line superintendent at (718) 927-7290