

# Straphangers Campaign



## SUBWAY LINE PROFILE



**Straphangers Campaign MetroCard Rating \$1.30**

The L line ranks best of the 20 subway lines rated by the Straphangers Campaign. Our ranking is based on the MTA New York City Transit data below, using a method described at [www.straphangers.org](http://www.straphangers.org)

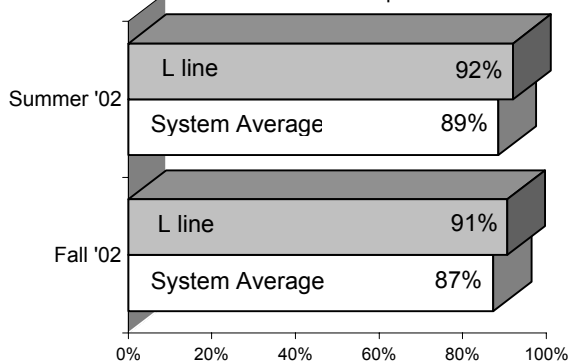
### The L line is scheduled to come more often than most subway lines. . .

scheduled minutes between weekday trains as of December 2002

	AM Rush	Noon	PM Rush	Overnight
<b>L line</b>	<b>4</b>	<b>8</b>	<b>4</b>	<b>20</b>
<b>System Average</b>	<b>6:02</b>	<b>8:52</b>	<b>6:23</b>	<b>20</b>

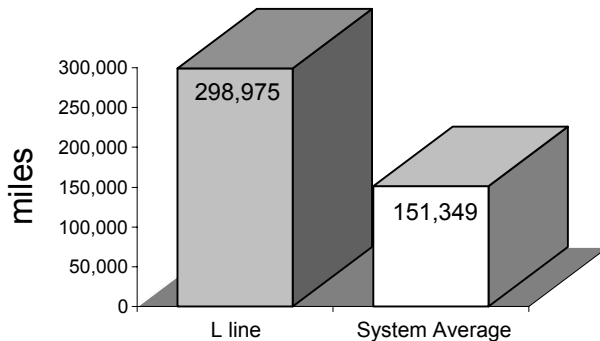
### and arrives with regularity more often than the average line.

% of trains arriving at regular intervals (without gaps in service or train "bunching") between 6 a.m. and 9 p.m.



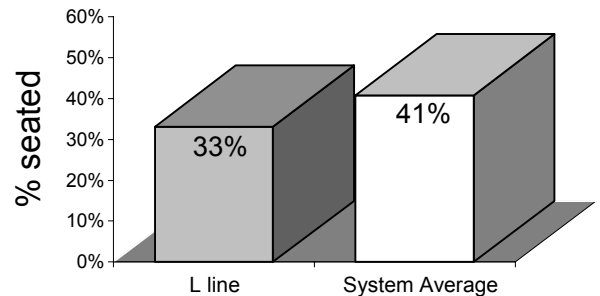
### Cars on the L have the lowest breakdown rate in the system.

average miles traveled between delays caused by mechanical failures, July to December 2002



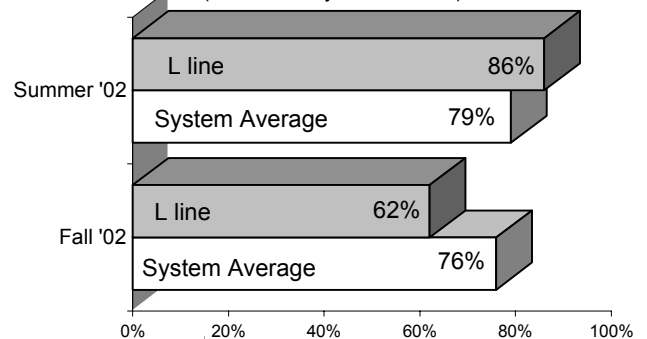
### You're less likely to get a seat on the L.

% of passengers with seats at most crowded point during rush hour



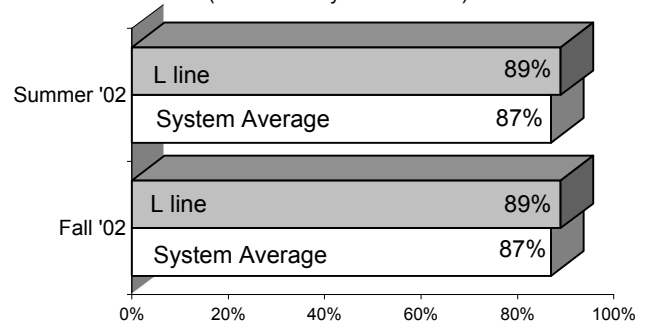
### On cleanliness, the L performs both above and below average. . .

% of cars with "light or no interior dirtiness" (as defined by NYC Transit)



### and above average on in-car announcements.

% of trains with correct announcements (as defined by NYC Transit)



**Suggestions? Complaints? Call the L line superintendent at (718) 927-8562.**