

Straphangers Campaign

G SUBWAY LINE PROFILE



Straphangers Campaign MetroCard Rating **No Rating**

The G line profile is based on the MTA New York City Transit information below. (There is no MetroCard rating for the G. Its data on crowding cannot be compared to other lines.) Full methodology is available at

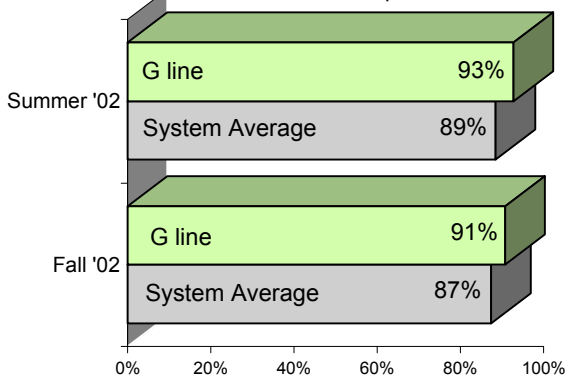
The G line is scheduled to come less often than most lines. . .

scheduled minutes between weekday trains
as of December 2002

	AM Rush	Noon	PM Rush	Overnight
G line	7:30	10	8	20
System Average	6:02	8:52	6:23	20

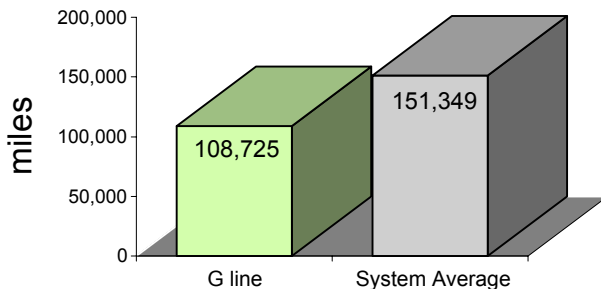
but arrives with regularity more often than the average line.

% of trains arriving at regular intervals
(without gaps in service or train "bunching")
between 6 a.m. and 9 p.m.



The G breaks down more often than most lines.

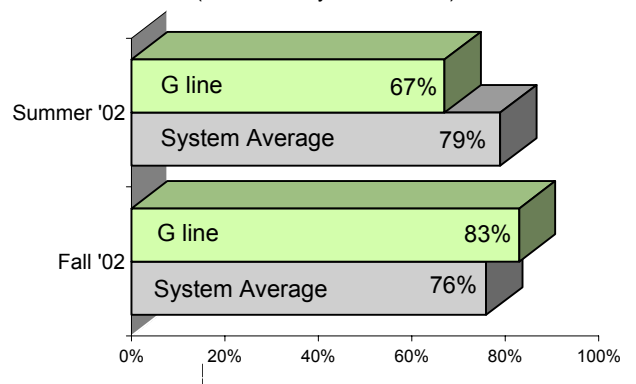
average miles traveled between delays caused by
mechanical failures, July to December 2002



Reliable crowding data for the G line is unavailable.

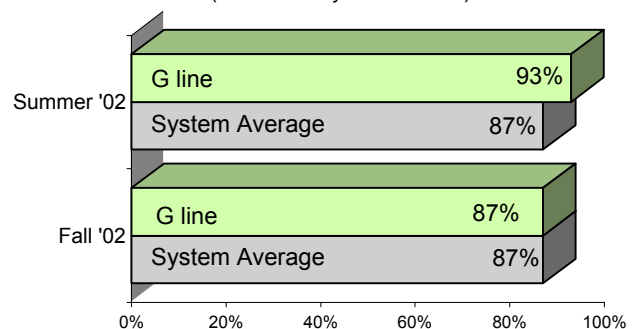
On cleanliness, the G line is inconsistent. . .

% of cars with "light or no interior dirtiness"
(as defined by NYC Transit)



but performs at or above average on in-car announcements.

% of trains with correct announcements
(as defined by NYC Transit)



Suggestions? Complaints? Call the G line superintendent at (718) 334-8190.