

Straphangers Campaign

B SUBWAY LINE PROFILE



The B line ranks 12th out of the 20 subway lines rated by the Straphangers Campaign. Our ranking is based on the MTA New York City Transit data below, using a method described at www.straphangers.org.

Straphangers Campaign MetroCard Rating \$1.00

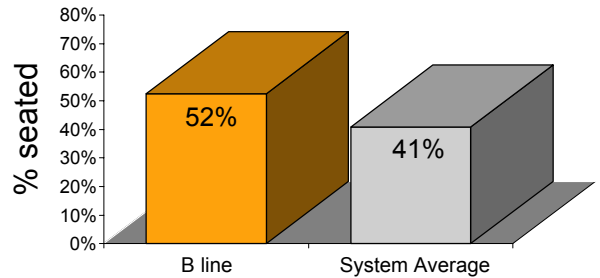
The B line is tied for least amount of daytime service, and doesn't run at night. . .

scheduled minutes between weekday trains as of December 2002

	AM Rush	Noon	PM Rush	Overnight
B line	9	10	10	-
System Average	6:02	8:52	6:23	20

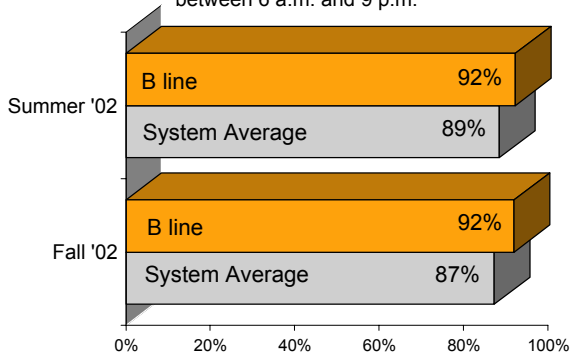
You're more likely to get a seat on the B.

% of passengers with seats at most crowded point during rush hour



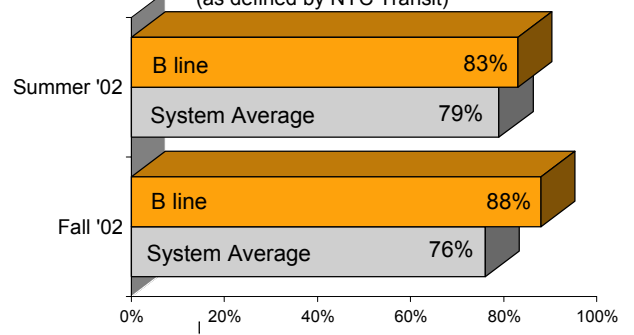
but is tied for best regularity of arrivals.

% of trains arriving at regular intervals (without gaps in service or train "bunching") between 6 a.m. and 9 p.m.



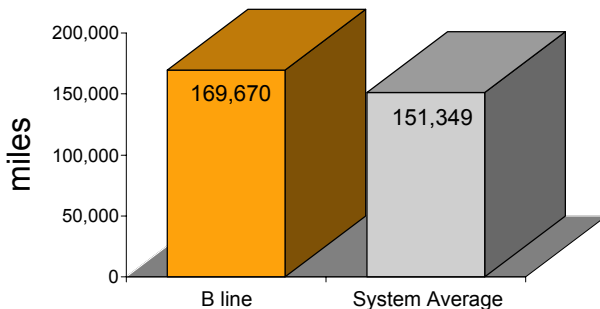
The B is cleaner than average. . .

% of cars with "light or no interior dirtiness" (as defined by NYC Transit)



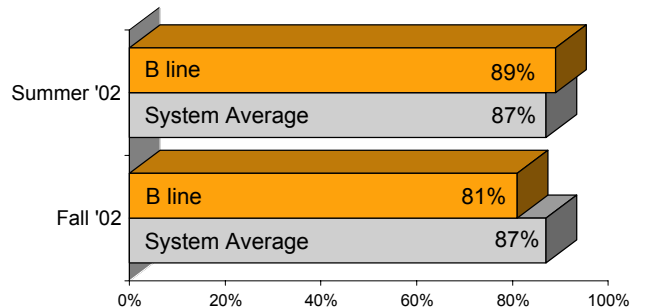
The B breaks down less often than the average line.

average miles traveled between delays caused by mechanical failures, July to December 2002



but performs both above and below average on in-car announcements.

% of trains with correct announcements (as defined by NYC Transit)



Suggestions? Complaints? Call the B line superintendent at (212) 424-5633.