

Straphangers Campaign

5 SUBWAY LINE PROFILE



Straphangers Campaign
MetroCard Rating **65¢**

The 5 line ranks worst of the 20 subway lines rated by the Straphangers Campaign. Our ranking is based on the MTA New York City Transit data below, using a method described at www.straphangers.org.

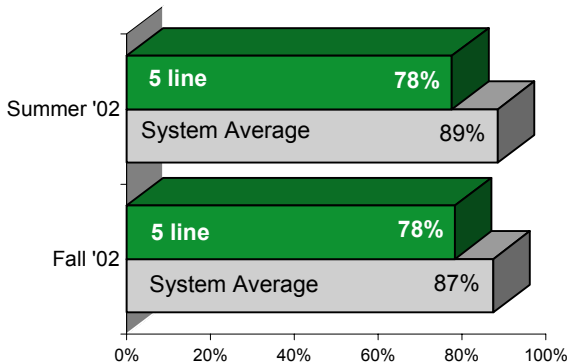
The 5 line is scheduled to come less often than most other subway lines. . .

scheduled minutes between weekday trains
as of December 2002

	AM Rush	Noon	PM Rush	Overnight
5 line	6:30	10	7:30	20
System Average	6:02	8:52	6:23	20

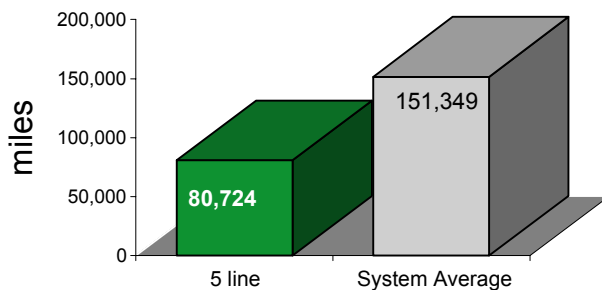
and arrives with the lowest regularity of any line in the system.

% of trains arriving at regular intervals
(without gaps in service or train "bunching")
between 6 a.m. and 9 p.m.



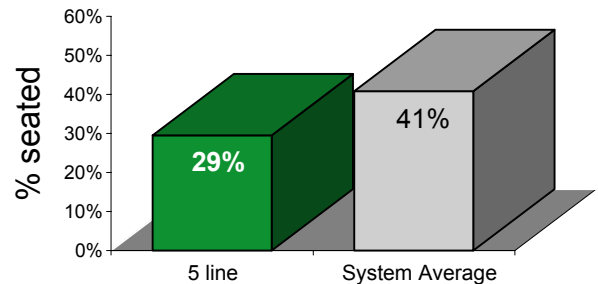
The 5 breaks down the most of any line.

average miles traveled between delays caused by
mechanical failures, July to December 2002



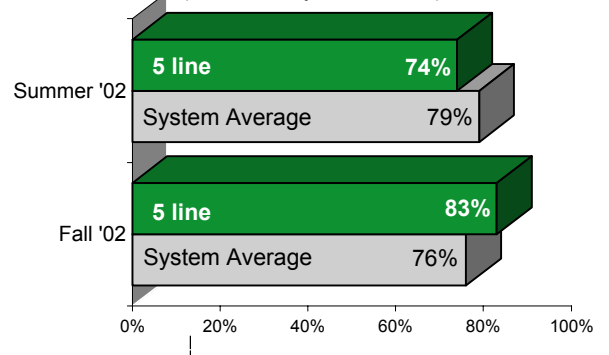
You're less likely to get a seat on the 5.

% of passengers with seats
at most crowded point during rush hour



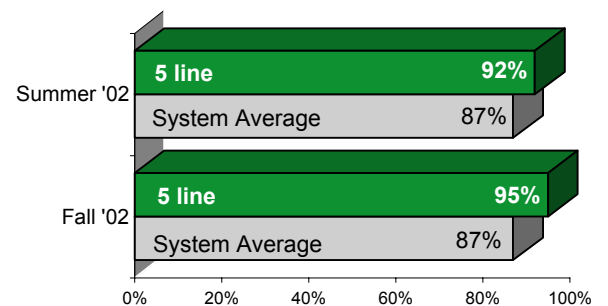
On cleanliness, the 5 is inconsistent. . .

% of cars with "light or no interior dirtiness"
(as defined by NYC Transit)



but performs above average on in-car announcements.

% of trains with correct announcements
(as defined by NYC Transit)



Suggestions? Complaints? Call the 5 line superintendent at (718) 430-8229.