

# Straphangers Campaign

## 4 SUBWAY LINE PROFILE

The 4 line ranks 14th out of the 19 subway lines rated by the Straphangers Campaign. Our ranking is based on the MTA New York City Transit data below, using a method described at [www.straphangers.org](http://www.straphangers.org).



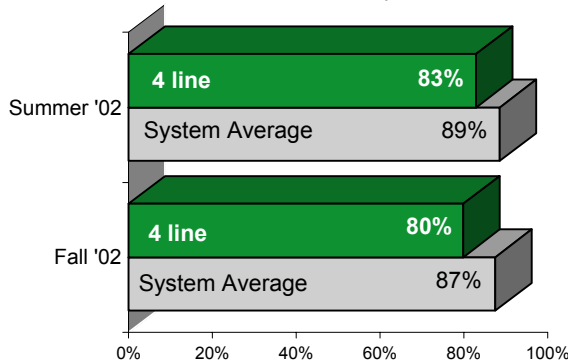
### The 4 has the most scheduled service of all subway lines. . .

scheduled minutes between weekday trains  
as of December 2002

	AM Rush	Noon	PM Rush	Overnight
<b>4 line</b>	<b>4</b>	<b>5</b>	<b>4:15</b>	<b>20</b>
<b>System Average</b>	<b>6:02</b>	<b>8:52</b>	<b>6:23</b>	<b>20</b>

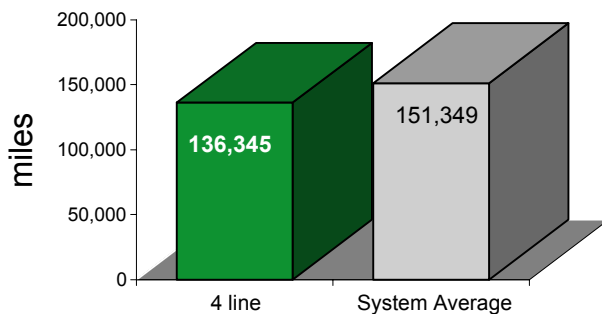
### but arrives with lower-than-average regularity.

% of trains arriving at regular intervals  
(without gaps in service or train "bunching")  
between 6 a.m. and 9 p.m.



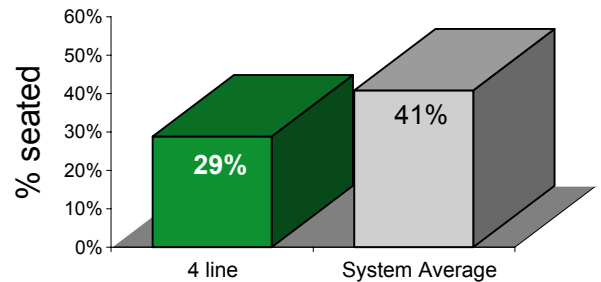
### Cars on the 4 line break down more often than those on the average line.

average miles traveled between delays caused by  
mechanical failures, July to December 2002



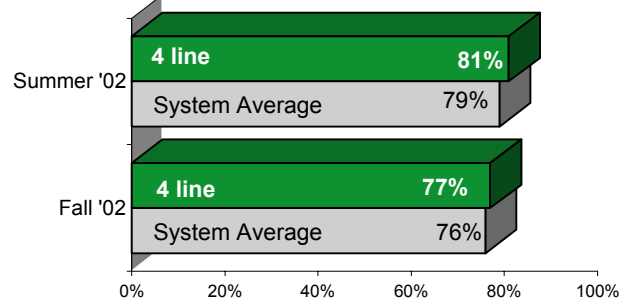
### You're least likely to get a seat on the 4.

% of passengers with seats  
at most crowded point during rush hour



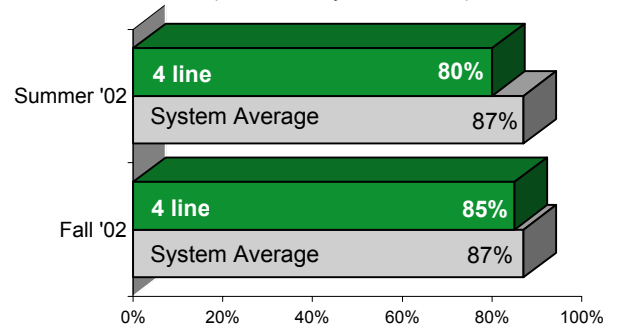
### The 4 is cleaner than the average line. . .

% of cars with "light or no interior dirtiness"  
(as defined by NYC Transit)



### but is below average on in-car announcements.

% of trains with correct announcements  
(as defined by NYC Transit)



**Suggestions? Complaints? Call the 4 line superintendent at (212) 424-4129.**