

Straphangers Campaign

2 SUBWAY LINE PROFILE



Straphangers Campaign MetroCard Rating \$1.10

The 2 line ranks 9th out of the 20 subway lines rated by the Straphangers Campaign. Our ranking is based on the MTA New York City Transit data below, using a method described at www.straphangers.org.

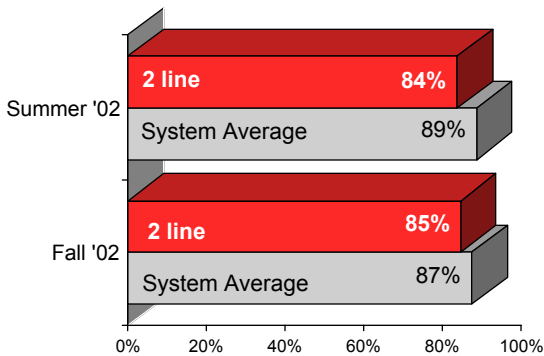
The 2 line is scheduled to come more often than most subway lines. . .

scheduled minutes between weekday trains
as of December 2002

	AM Rush	Noon	PM Rush	Overnight
2 line	5:45	8	6	20
System Average	6:02	8:52	6:23	20

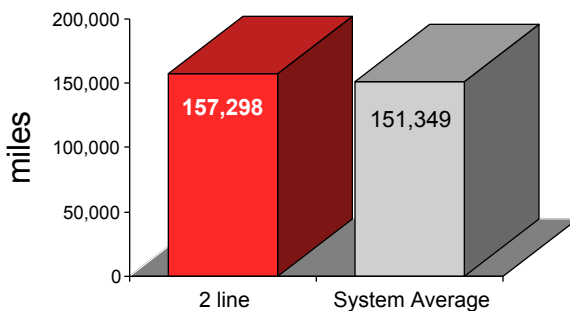
but arrives with below-average regularity.

% of trains arriving at regular intervals
(without gaps in service or train "bunching")
between 6 a.m. and 9 p.m.



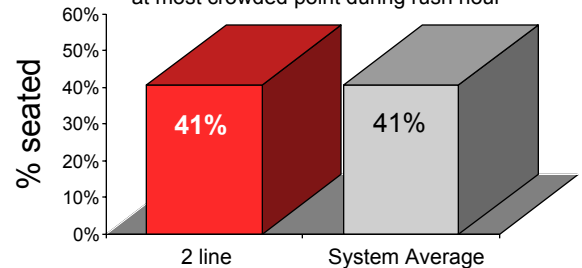
Cars on the 2 break down less often than those on the average line.

average miles traveled between delays caused by
mechanical failures, July to December 2002



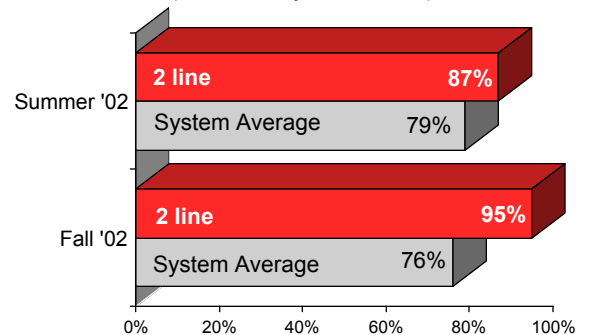
You have an average chance of getting a seat on the 2.

% of passengers with seats
at most crowded point during rush hour



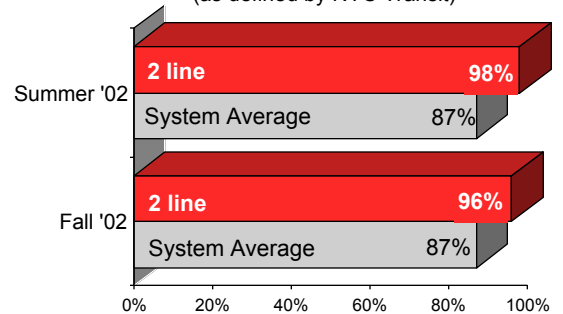
The 2 is cleaner than average. . .

% of cars with "light or no interior dirtiness"
(as defined by NYC Transit)



and performs above average on in-car announcements.

% of trains with correct announcements
(as defined by NYC Transit)



Suggestions? Complaints? Call the 2 line superintendent at (718) 430-5119.