

Straphangers Campaign

1/9 SUBWAY LINE PROFILE



Straphangers Campaign
MetroCard Rating \$1.20

The 1 & 9 line ranks 6th out of the 20 subway lines rated by the Straphangers Campaign. Our ranking is based on the MTA New York City Transit data below, using a method described at www.straphangers.org.

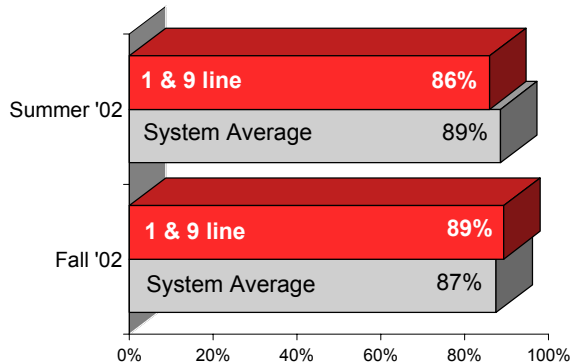
The 1 & 9 line is scheduled to come more often than most subway lines. . .

scheduled minutes between weekday trains as of December 2002

	AM Rush	Noon	PM Rush	Overnight
1 & 9 line	4	5	4:30	20
System Average	6:02	8:52	6:23	20

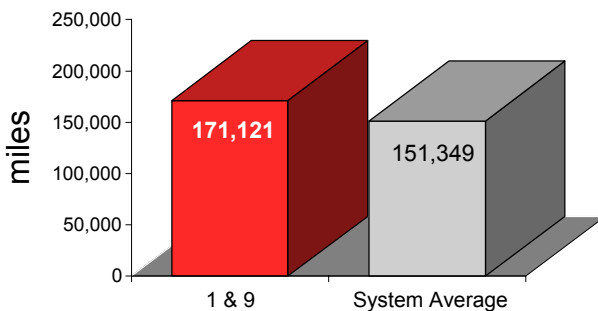
but arrives with both above and below average regularity.

% of trains arriving at regular intervals (without gaps in service or train "bunching") between 6 a.m. and 9 p.m.



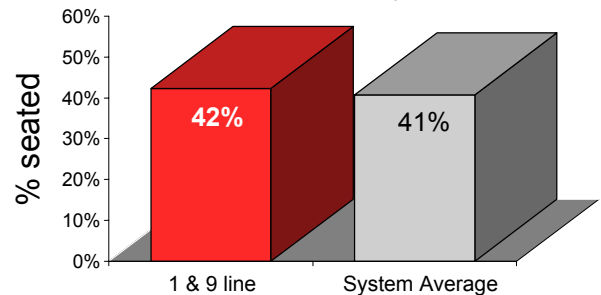
The 1 & 9 line breaks down less often than the average line.

average miles traveled between delays caused by mechanical failures, July to December 2002



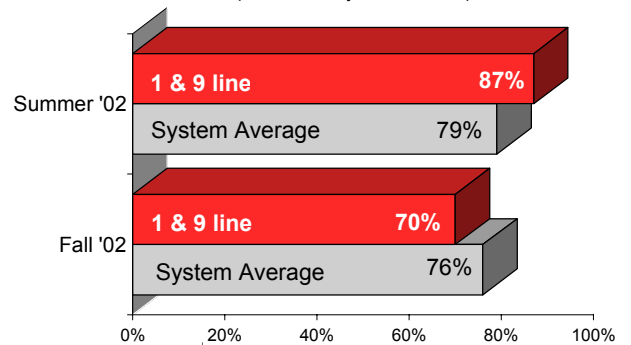
You're more likely to get a seat on the 1 & 9.

% of passengers with seats at most crowded point during rush hour



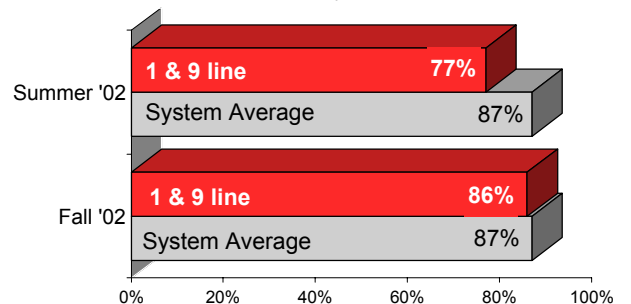
On cleanliness, the 1 & 9 performs both above and below the system average. . .

% of cars with "light or no interior dirtiness" (as defined by NYC Transit)



but has the worst in-car announcements.

% of trains with correct announcements (as defined by NYC Transit)



Suggestions? Complaints? Call the 1 & 9 line superintendent at (212) 704-0537.